

FLOW SENSORS

Type **ELK**

SAGInoMIYA

GENERAL DESCRIPTION

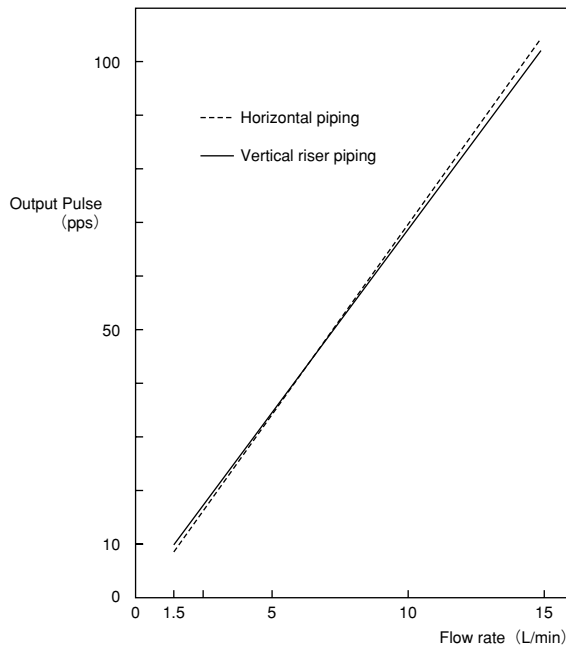
- Turbine type flow sensor having an impeller to rotate in proportion to flow rate.
- For burner On-Off of hot water supply system, accumulation of automatic hot water supply.
- Pulse output corresponding flow rate.
- Max. working pressure: 1MPa
- Fluid temperature: 0 to 80°C (No frozen)
- Rated voltage: 4.5 to 13.2 V. DC
- Housing body material: PPS
- Installation is vertical riser piping or horizontal piping.



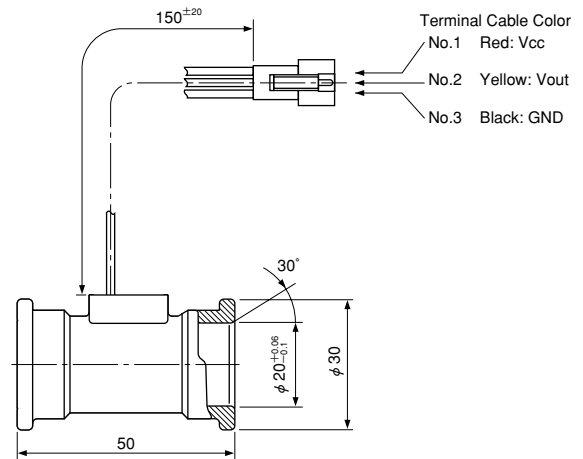
SPECIFICATIONS

Catalog No.	Range of Flow Rate (L/min)	Flow Rate–Output Pulse Characteristics			Output Mode	Max. Output Current (mA)	Wt. (kg)
		Based Flow Rate (L/min)	Vertical riser piping (pps)	Horizontal piping (pps)			
ELK-0501	1.5 to 25	1.5	9.6p2	7.7±2	Open Collector	15	0.025
		10	68.7±6	69.2±6			
		15	102.9±12	104.1±12			

FLOW RATE–OUTPUT PULSE CHARACTERISTICS



DIMENSIONS



Unit: mm