

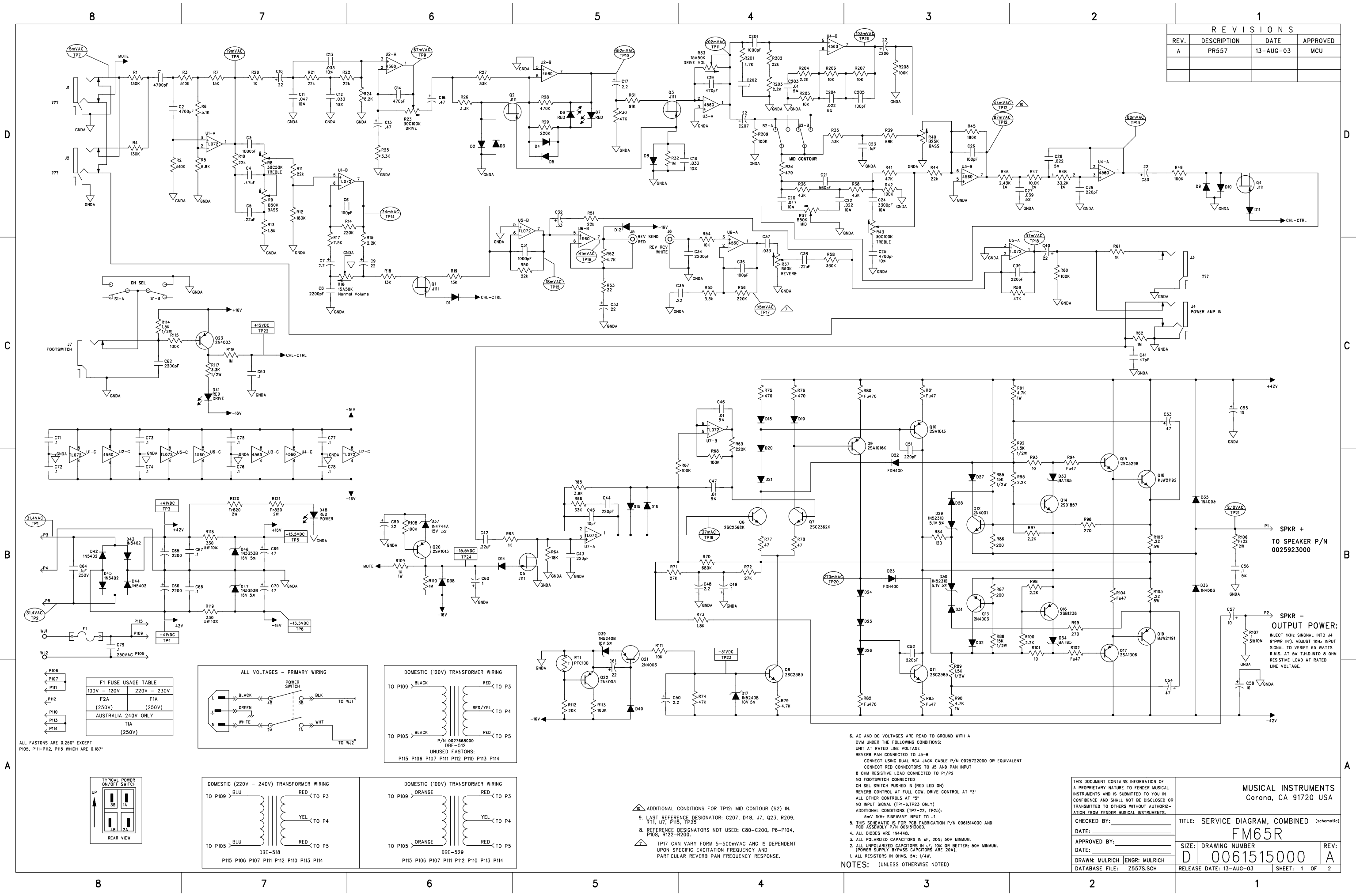
**231600000**

**FM-65R (non-servicable)**

0062679000	SPEAKER, FM65R, AXL	
0062681000	INPUT JACK, FM65R, (ALL JACKS)	
0062682000	REVERB TANK, FM65R, AXL	
0062683000	KNOB, FM65R, AXL, (ALL KNOBS)	
0062680000	CONTROL, 50K B, FM65R	(NORMAL BASS, DRIVE MID, REVERB)
0069524000	CONTROL, 50K 30C, FM65R	(NORMAL TREBLE)
0069525000	CONTROL, 50K 15A, FM65R	(NORMAL VOLUME)
0069526000	CONTROL, 100K 30C, FM65R	(DRIVE TREBLE, DRIVE)
0069527000	CONTROL, 100K B, FM65R	(DRIVE VOLUME)
0069528000	CONTROL, 25K B, FM65R	(DRIVE BASS)
0994052000	FOOTSWITCH	

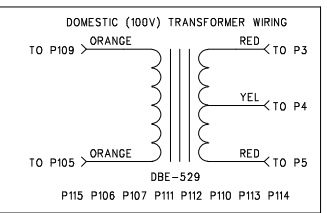
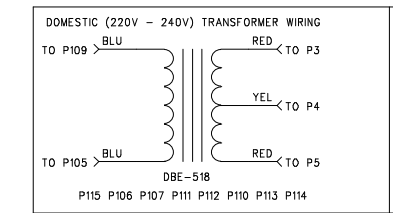
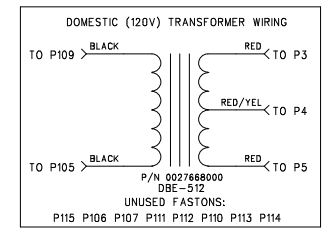
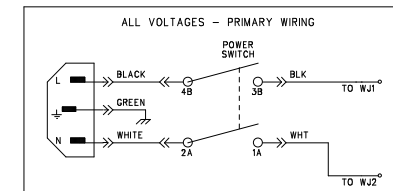


REVISIONS			
REV.	DESCRIPTION	DATE	APPROVED
A	PR557	13-AUG-03	MCU

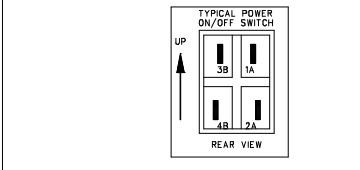


F1 FUSE USAGE TABLE

FUSE	VOLTAGE	RATING
P106	100V - 120V	220V - 230V
P111	F2A (250V)	F1A (250V)
P112	AUSTRALIA 240V ONLY	
P110	T1A (250V)	
P113		
P114		



ALL FASTONS ARE 0.250" EXCEPT P105, P111-P112, P115 WHICH ARE 0.187"



- ADDITIONAL CONDITIONS FOR TP12: MID CONTOUR (S2) IN.
- LAST REFERENCE DESIGNATOR: C207, D48, J7, Q23, R209, R11, U7, P115, TP25
  - REFERENCE DESIGNATORS NOT USED: C80-C200, P6-P104, P108, R122-R200.
  - TP17 CAN VARY FROM 5-500mVAC ANG IS DEPENDENT UPON SPECIFIC EXCITATION FREQUENCY AND PARTICULAR REVERB PAN FREQUENCY RESPONSE.

- AC AND DC VOLTAGES ARE READ TO GROUND WITH A DVM UNDER THE FOLLOWING CONDITIONS:  
UNIT AT RATED LINE VOLTAGE  
REVERB PAN CONNECTED TO J5-6  
CONNECT USING DUAL RCA JACK CABLE P/N 0025722000 OR EQUIVALENT  
CONNECT RED CONNECTORS TO J5 AND PAN INPUT
  - 8 OHM RESISTIVE LOAD CONNECTED TO P1/P2
  - NO FOOTSWITCH CONNECTED
  - CH SEL SWITCH PUSHED IN (RED LED ON)
  - REVERB CONTROL AT FULL CCW. DRIVE CONTROL AT "3"
  - ALL OTHER CONTROLS AT "0"
  - NO INPUT SIGNAL (TP1-6, TP23 ONLY)
  - ADDITIONAL CONDITIONS (TP7-22, TP25):  
5mV 1kHz SINEWAVE INPUT TO J1
  - THIS SCHEMATIC IS FOR PCB FABRICATION P/N 0061514000 AND PCB ASSEMBLY P/N 0061513000.
  - ALL DIODES ARE 1N4448.
  - ALL POLARIZED CAPACITORS IN uF, 20% 50V MINIMUM.
  - ALL UNPOLARIZED CAPACITORS IN uF, 10% OR BETTER; 50V MINIMUM. (POWER SUPPLY BYPASS CAPACITORS ARE 20%).
  - ALL RESISTORS IN OHMS, 5% 1/4W.
- NOTES: (UNLESS OTHERWISE NOTED)

THIS DOCUMENT CONTAINS INFORMATION OF A PROPRIETARY NATURE TO FENDER MUSICAL INSTRUMENTS AND IS SUBMITTED TO YOU IN CONFIDENCE AND SHALL NOT BE DISCLOSED OR TRANSMITTED TO OTHERS WITHOUT AUTHORIZATION FROM FENDER MUSICAL INSTRUMENTS.		MUSICAL INSTRUMENTS Corona, CA 91720 USA	
CHECKED BY:	DATE:	TITLE: SERVICE DIAGRAM, COMBINED (schematic)	
APPROVED BY:		FM65R	
DATE:	DRAWN: MULRICH ENGR: MULRICH	SIZE: DRAWING NUMBER	REV: A
DATABASE FILE: Z557S.SCH	RELEASE DATE: 13-AUG-03	D 0061515000	
SHEET: 1 OF 2			