

Since this is a basic circuit diagram, the value of the parts is subject to be altered for improvement. All DC voltage to be measured with a tester (100K Ω /V).

Voltage taken on a complex color bar signal including a standard color bar signal.

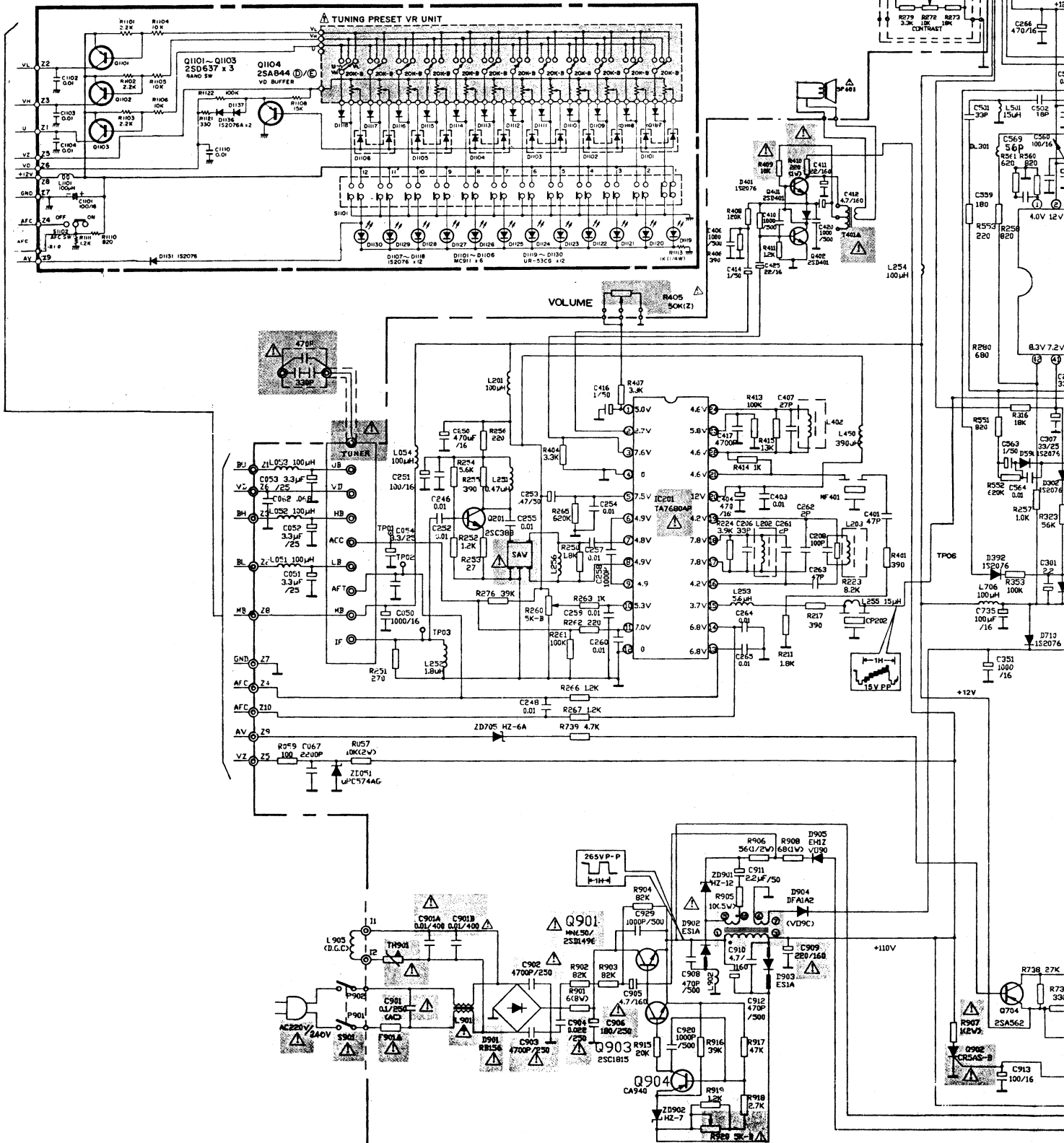
Capacitor expresses the dimension of "uF" P = μ F

— Fuse resistor

HITACHI FUJIAN

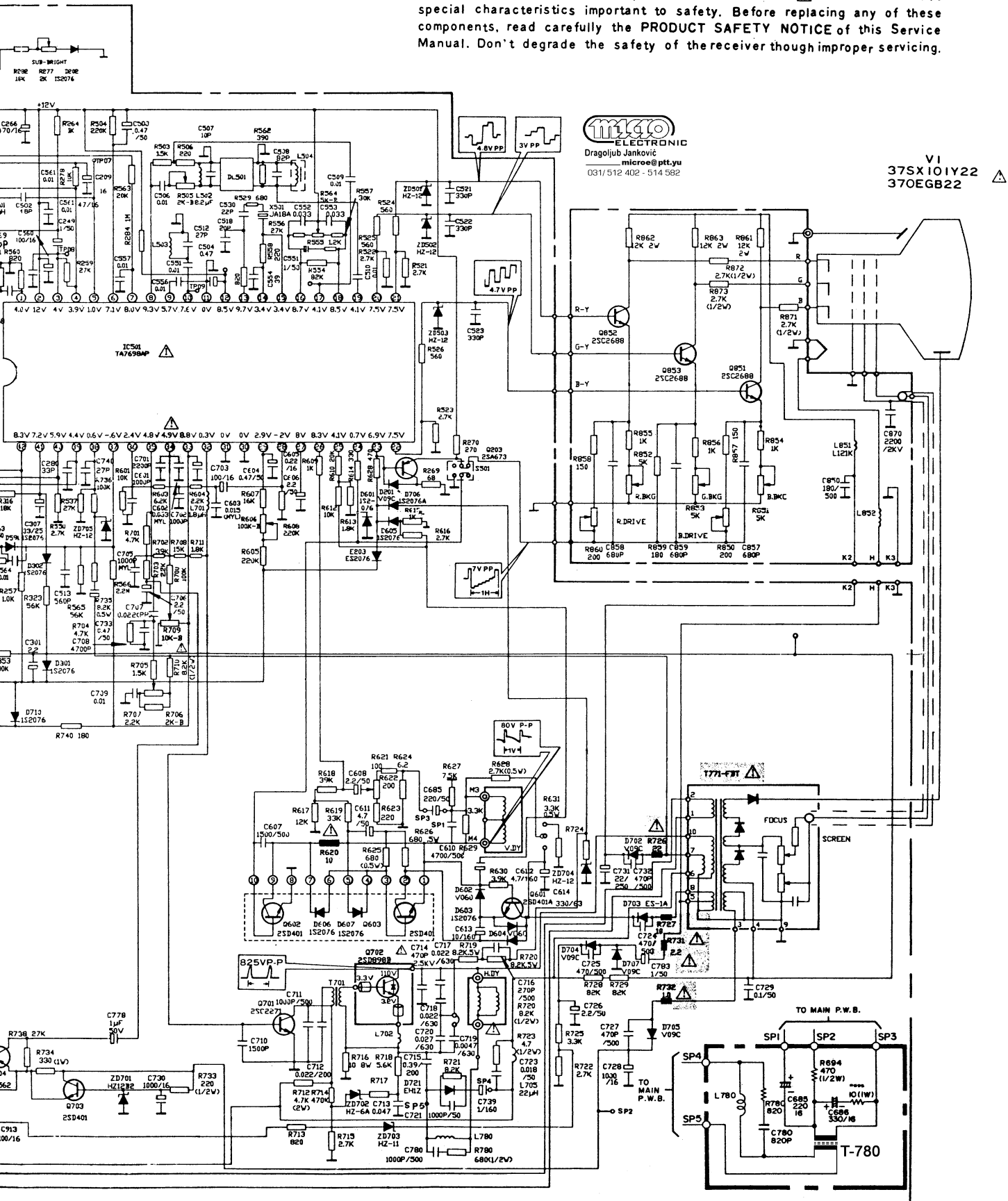
HFC - 1421B

chassis F87PT



CIRCUIT DIAGRAM (HFC-1421B)

PRODUCT SAFETY NOTE: Components marked with a Δ and shaded have special characteristics important to safety. Before replacing any of these components, read carefully the PRODUCT SAFETY NOTICE of this Service Manual. Don't degrade the safety of the receiver though improper servicing.



micro ELECTRONIC
Dragoljub Jankovic
micro@ptt.yu
031/512 402 - 514 582

V1
375X101Y22
370EGB22 Δ

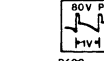
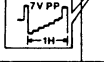
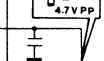
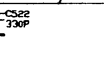
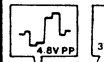
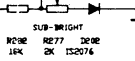
IC501
TA7698MP Δ

1771-FBT Δ

FOCUS

SCREEN

T-780



4.2V 12V 4V 3.9V 10.7V 7.1V 8.0V 9.3V 5.7V 7.6V 0V 8.5V 9.7V 3.4V 3.4V 8.7V 4.1V 8.5V 4.1V 7.5V 7.5V

8.3V 7.2V 5.9V 4.4V 0.6V -6V 2.4V 4.8V 4.9V 8.8V 0.3V 0V 0V 2.9V -2V 8V 8.3V 4.1V 0.7V 6.9V 7.5V

TO MAIN P.W.B.

TO MAIN P.W.B.

TO MAIN P.W.B.