

# **SERVICE MANUAL** **& PARTS LIST** (with price)

## **POCKET TELEVISION**

### **TV-1750I** **TV-1750N**

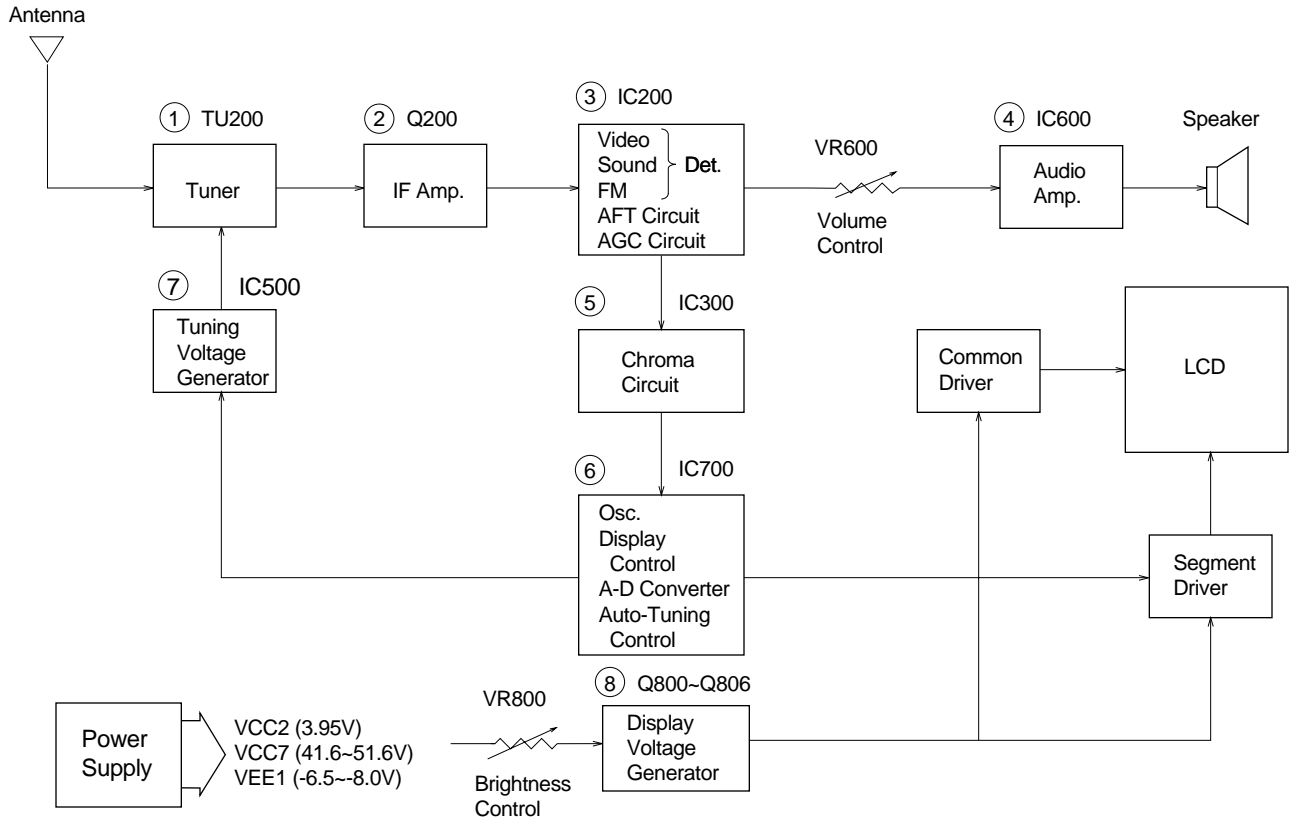
	Page
Specifications.....	2
Block Diagram .....	3
Circuit Operations .....	4
Adjustment	
Linear PCB.....	5
Printed Circuit Boards .....	9
Electrical Parts List .....	11
Mechanical Parts List.....	17
Exploded View / Disassembly.....	18
Wiring Diagram .....	19
Schematic Diagrams and Waveforms .....	20

**CASIO®**

# SPECIFICATIONS

Item	Specification									
Reception Channels	<table style="width: 100%; border-collapse: collapse;"> <thead> <tr> <th style="width: 30%;"></th> <th style="width: 35%; text-align: center;">VHF</th> <th style="width: 35%; text-align: center;">UHF</th> </tr> </thead> <tbody> <tr> <td>TV-1750N</td> <td style="text-align: center;">2 ~ 12 ch</td> <td style="text-align: center;">21 ~ 69 ch</td> </tr> <tr> <td>TV-1750I</td> <td style="text-align: center;">A ~ H2 ch</td> <td style="text-align: center;">21 ~ 69 ch</td> </tr> </tbody> </table>		VHF	UHF	TV-1750N	2 ~ 12 ch	21 ~ 69 ch	TV-1750I	A ~ H2 ch	21 ~ 69 ch
	VHF	UHF								
TV-1750N	2 ~ 12 ch	21 ~ 69 ch								
TV-1750I	A ~ H2 ch	21 ~ 69 ch								
Power Voltage	DC 6.0 V									
Power Consumption	Approx. 3.6 W									
Current Consumption	Approx. 600 mA									
Battery Life (with alkaline batteries)	Approx. 2.5 hours									
Power Supply	Batteries : 4 AA size batteries Car adaptor : CA-K65 AC adaptor : AD-K65									
Connection Terminals	Earphone jack : 3.5ø mini External power jack : 6.0 V DC IN									
Screen Size	2.5 inches									
No. of Picture Element	118,800 (220 × 540) dots									
Dimensions	135.5 mm (H) × 91 mm (W) × 38.1 mm (D)									
Weight	240 g excluding batteries 8.5 oz excluding batteries									
Options	AC adaptor : AD-K65 Car adaptor : CA-K65									
Body Color	Black									

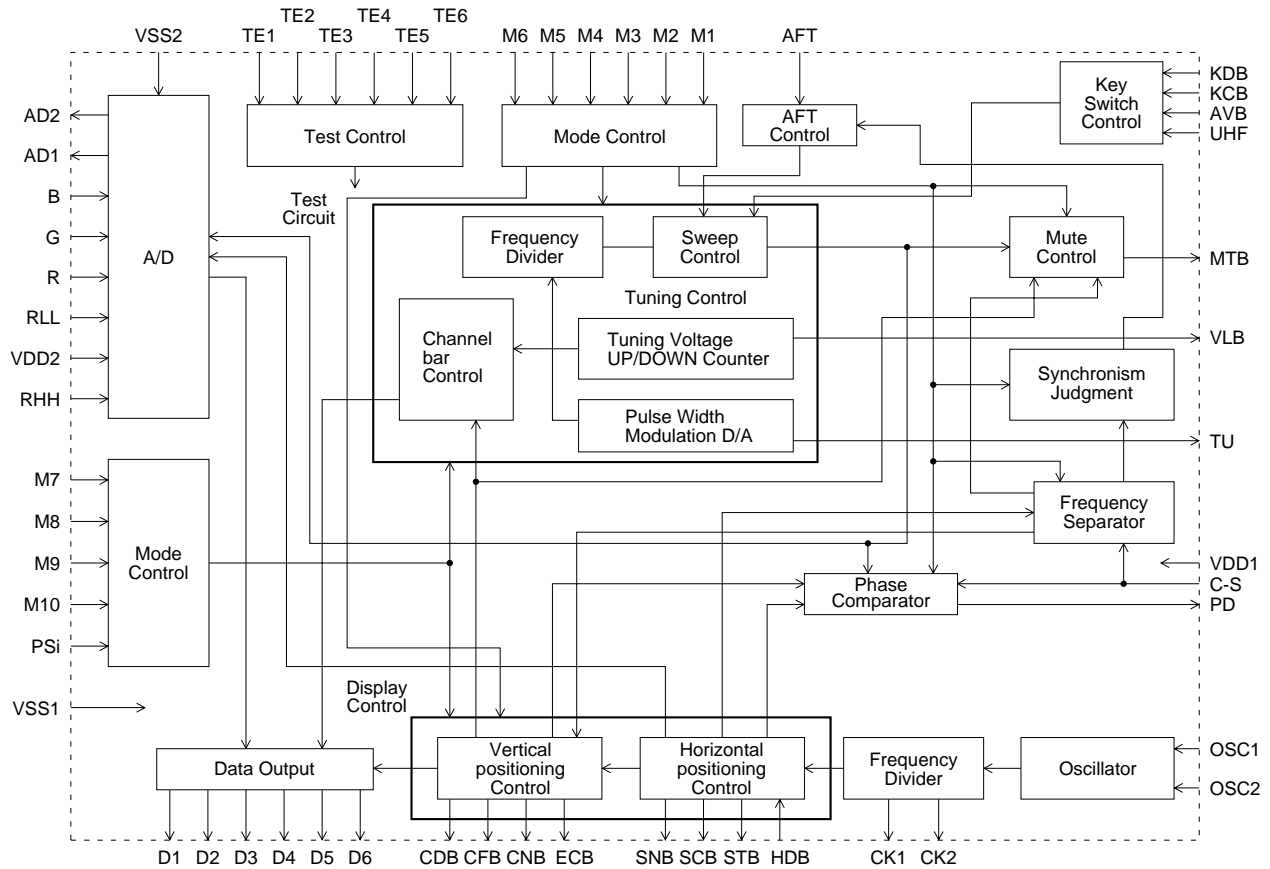
# BLOCK DIAGRAM



- ① — Color Tuner: TU200 TEPE5-01  
Selects a desired radio wave and changes it to the video IF signal.
- ② — Video IF Amp.: Q200 2SC4238  
Amplifies the video IF signal output from the tuner TU by 10 times (20 dB).
- ③ — Video Det./Sound Det./FM Det./AFT/AGC: IC200 M51348FP  
Eliminates the carrier wave in the video IF signal, and picks up the video signal and the sound IF signal. Also, the sound signal is picked up from the sound IF signal by FM detection.
- ④ — Audio Amp.: IC600 NJM2070M  
Sound amplification.
- ⑤ — Chroma Circuit: IC300 M52045FP  
Generates the tricolor (red, green, and blue) from the video signal.
- ⑥ — OSC/A-D Converter/Display Control/ Auto-Tuning Control : IC700 MSM662501 GSK-640E  
Converts the color signal into a digital signal.  
Also, generates the clock pulse for the display and controls the display.
- ⑦ — Tuning Voltage Generator: IC500 MSC1169MS-K  
Generates the tuning voltage with the tuning pulse (TU) output from ⑥.
- ⑧ — Display Voltage Generator: IC800 BA10358F, Q804 ~ Q806 Q810 Q811 2SD1149S, 2SD601A-R×3, 2SB709A-R  
Generates the display voltages V0 ~ V4 with VEE1 and VCC7 outputs from the power supply.

# CIRCUIT OPERATIONS

## IC700



Signal Name	Function	Signal Name	Function
D1 ~ D6	Display data output terminal	MTB	Mute control terminal
SNB	Data latch signal	TU	Tuning control pulse output terminal
CDB	Scanning start signal	VLB	VHF High/Low channel select signal output terminal
CFB	Output voltage changeover signal	UHF	VHF/UHF select signal
CNB	Scanning signal shift lock signal	AVB KCB KDB	Key input terminal
SCB	Brightness modulation pulse control	AFT	AFT voltage input terminal
STB	Sampling start signal	M1 ~ M10	Mode select signal input terminal
ECB	Signal input terminal controlling the segment drive terminal to "H" during no display	TE1 ~ TE6	Test terminal
CK1, CK2	Clock pulse output terminal	R, G, B	Original color
OSC1 OSC2	Oscillator frequency control terminal	RLL	"L" level voltage input terminal of video signal
PD	Clock pulse adjustment terminal	RHH	"H" level voltage input terminal of video signal
C-S	Synchronizing pulse input terminal	PS1	Mode control signal
HDB	Horizontal synchronizing signal input terminal	VSS1	Power supply voltage input terminal
VDD1	VDD voltage input terminal		

# ADJUSTMENT

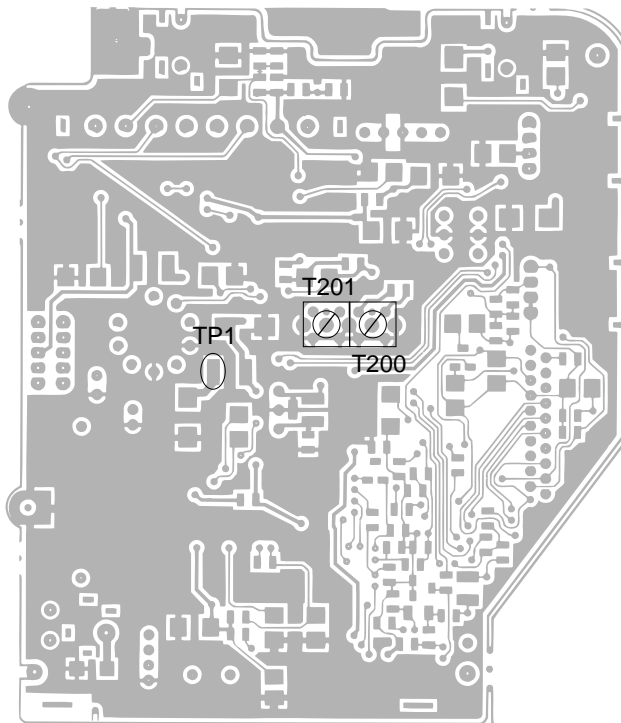
## Linear PCB

### 1) Items to Be Adjusted

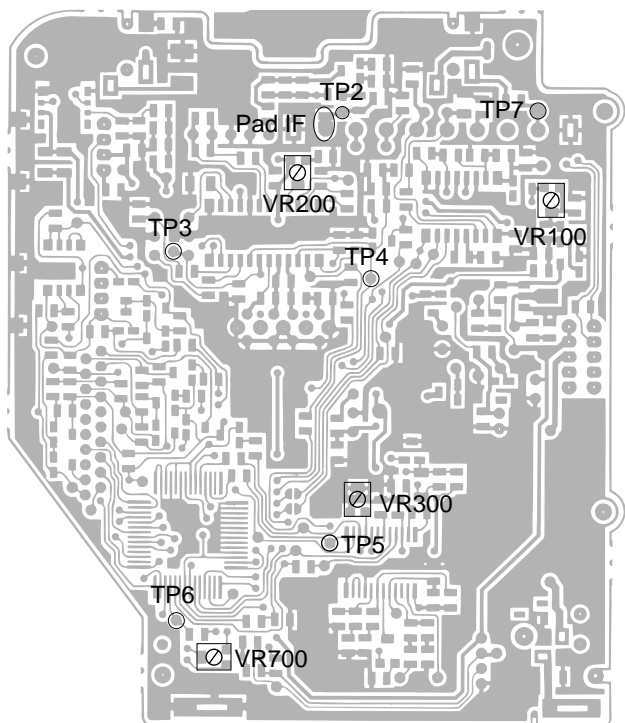
Item	Measuring Instrument
VCC2 voltage setting	Voltmeter
Video detection coil adjustment	TV signal generator, pattern generator, oscilloscope, low-pass filter
AFT coil adjustment	Sweep generator, oscilloscope, voltmeter
Contrast adjustment	TV signal generator, pattern generator, oscilloscope
AGC adjustment	TV signal generator, pattern generator, IF levelmeter
Clock adjustment	Voltmeter

### 2) Adjustment and Test Point Locations

#### TOP VIEW



**BOTTOM VIEW**

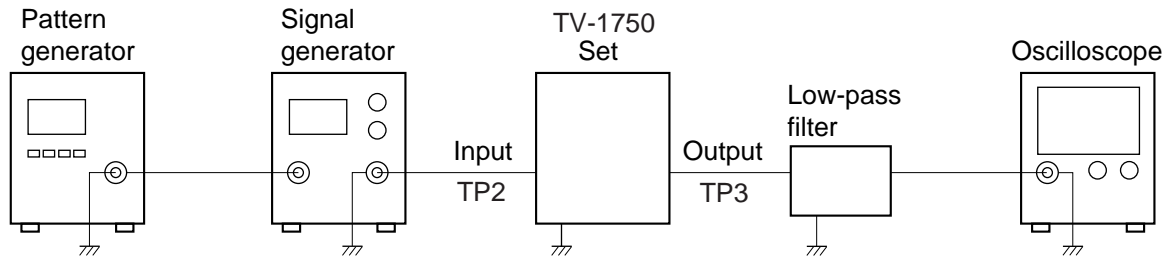


**3) Equipment Connection / Procedure**

VCC2 Voltage Setting						
<p>The diagram shows a TV-1750 Set connected to a Voltmeter. The TV-1750 Set is represented by a rectangle with a ground symbol below it. The Voltmeter is represented by a rectangle with a dial and a needle, and a ground symbol below it. A line labeled 'Output TP1' connects the TV-1750 Set to the Voltmeter.</p>						
Input Connection	Input Point	Input Signal	Adjust	Output Connection	Output Point	Result
_____	_____	_____	VR100	Voltmeter	TP1	Adjust for $4.30 \pm 0.02V$ reading on voltmeter.

### Video Detection Coil Adjustment

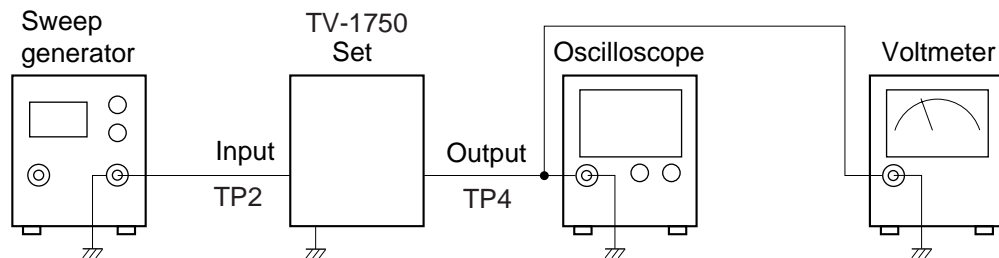
\* Open soldering pad IF.



Input Connection	Input Point	Input Signal	Adjust	Output Connection	Output Point	Result
Pattern generator Signal generator	TP2	Color bar 38.9MHz 40±3dBμ	T200	Low-pass filter Oscilloscope	TP3	Adjust for DC level at mini-

### AFT Coil Adjustment

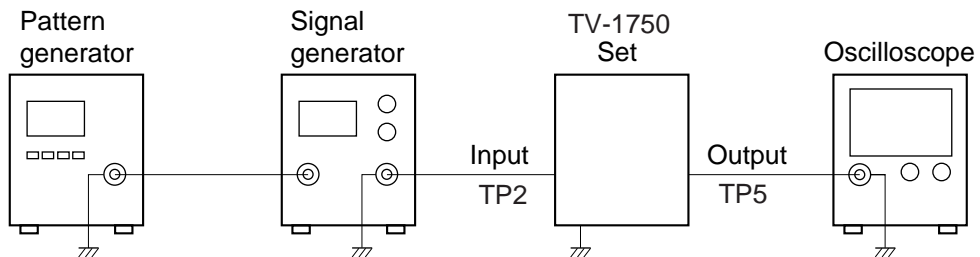
\* Open soldering pad IF.



Sweep generator	TP2	38.9±5MHz (Sweep) Maker:38.9MHz 70dBμ	T201	Voltmeter Oscilloscope	TP4	Adjust for 2.0 ± 0.2V reading on voltmeter. Confirm that the marker is at the middle of S-curve on oscilloscope.
-----------------	-----	---	------	---------------------------	-----	---

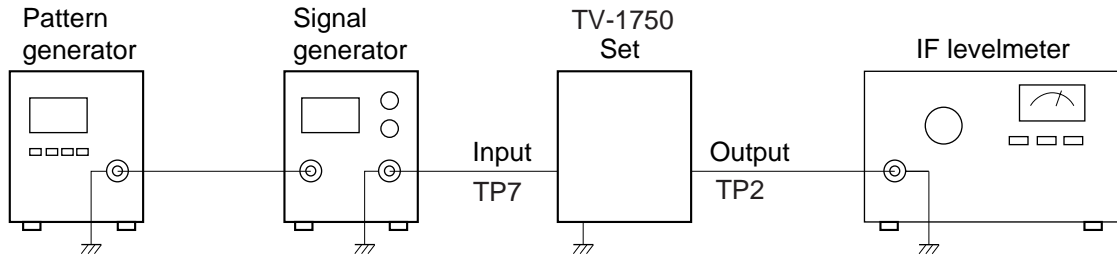
### Contrast Adjustment

\* Open soldering pad IF.



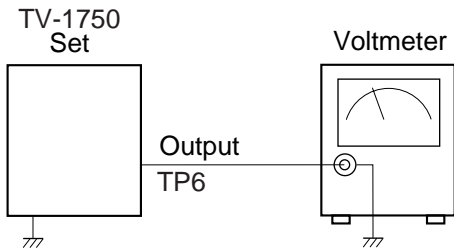
Pattern generator Signal generator	TP2	Color bar 38.9MHz 70dBμ	VR300	Oscilloscope	TP5	Adjust step form wave to read 0.90 ± 0.05 Vp-p.
---------------------------------------	-----	-------------------------------	-------	--------------	-----	---

### AGC Adjustment



Input Connection	Input Point	Input Signal	Adjust	Output Connection	Output Point	Result
Pattern generator TV signal generator	TP7	Color bar $65 \pm 5 \text{ dB}\mu$	VR200	IF levelmeter	TP2	Adjust for $84 \pm 1 \text{ dB}\mu$ reading on the IF levelmeter

### Clock Adjustment



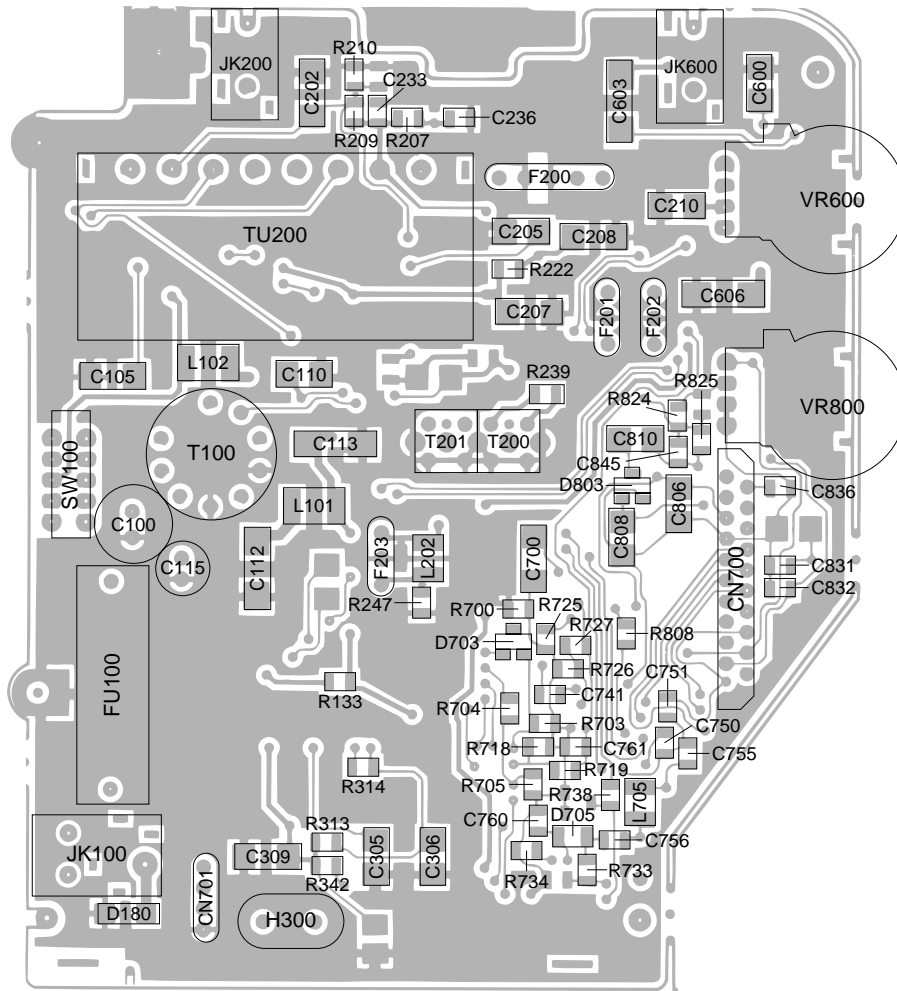
_____	_____	_____	VR700	Voltmeter	TP6	Adjust for $1.05 \pm 0.05\text{V}$ reading on voltmeter.
-------	-------	-------	-------	-----------	-----	---



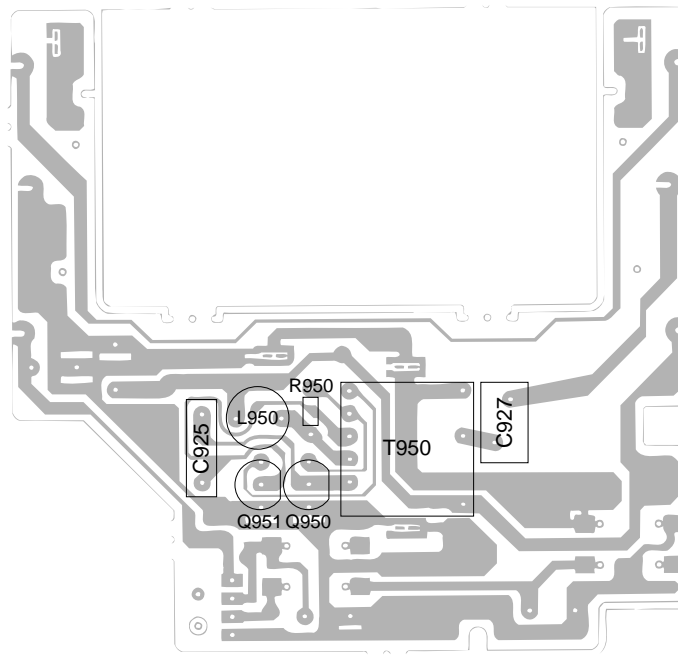
# PRINTED CIRCUIT BOARDS

## TOP VIEWS

Linear

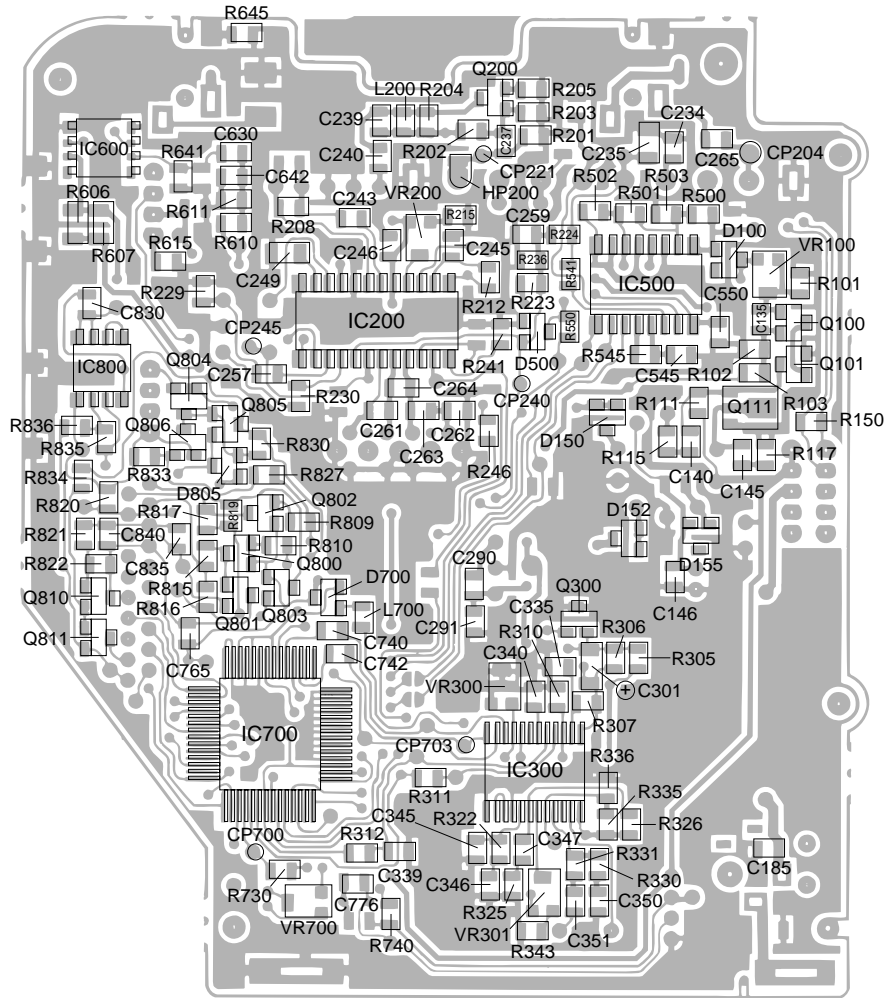


BL

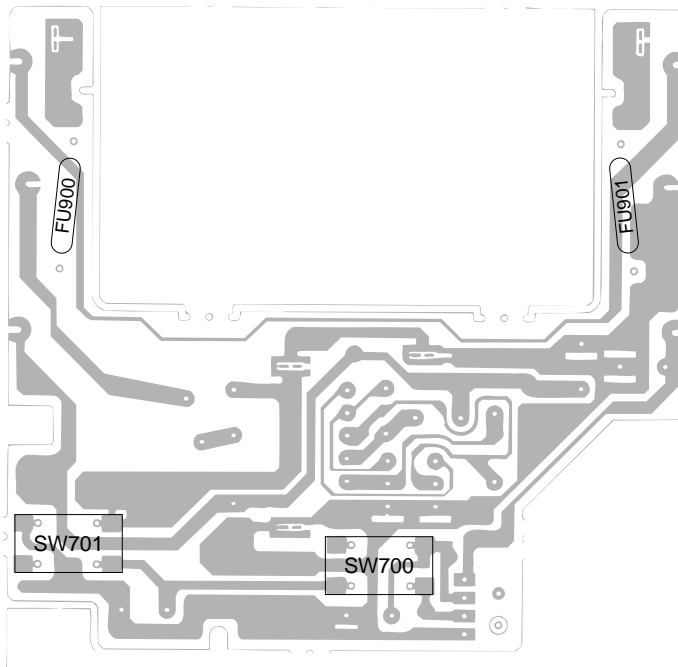


# BOTTOM VIEWS

Linear



BL



# ELECTRICAL PARTS LIST

Linear PCB Assembly No. 1

N	Item	Code No.	Parts Name	Specification	M	FOB Japan N.R.Yen Unit Price	R
<b>Capacitors</b>							
	C100	2805 2180	Electrolytic	10RE2-220	20	26	C
	C105	2807 6553	Electrolytic	6.3RV2-47-T	20	22	C
	C110	2803 6155	Electrolytic	16RV2-10-T	20	19	C
	C112	2807 6595	Electrolytic	ECE-V0JV101Z-P	10	33	C
	C113	2807 6595	Electrolytic	ECE-V0JV101Z-P	10	33	C
N	C115	2806 9252	Electrolytic	63RE2-10	20	12	C
	C135	2897 0112	Chip	GR40W5R562K50PT	20	12	C
	C140	2897 0112	Chip	GR40W5R562K50PT	20	12	C
	C145	2892 0083	Chip	GR40W5R103K50PT	10	14	C
N	C146	2897 1617	Chip	GR40CH221J200PT	20	15	C
	C185	2892 0040	Chip	GR40Y5V104Z25PT	10	14	C
	C202	2807 6553	Electrolytic	6.3RV2-47-T	20	22	C
N	C205	2807 6735	Electrolytic	50RV2-2R2-T	20	18	C
	C207	2807 6553	Electrolytic	6.3RV2-47-T	20	22	C
	C208	2807 6553	Electrolytic	6.3RV2-47-T	20	22	C
	C210	2803 6155	Electrolytic	16RV2-10-T	20	19	C
	C233		Not used				
	C234	2892 0059	Chip	GR40Y5V103Z50PT	10	9	C
	C235	2897 0994	Chip	GR42-6Y5V334Z50PT	20	19	C
	C236	2892 0059	Chip	GR40Y5V103Z50PT	10	9	C
	C237	2892 0059	Chip	GR40Y5V103Z50PT	10	9	C
	C239	2892 0113	Chip	GR40CH150J50PT	10	10	C
	C240	2892 0059	Chip	GR40Y5V103Z50PT	10	9	C
	C243	2892 0059	Chip	GR40Y5V103Z50PT	10	9	C
	C245	2892 0059	Chip	GR40Y5V103Z50PT	10	9	C
	C246	2892 0059	Chip	GR40Y5V103Z50PT	10	9	C
	C249	2892 0844	Chip	GR42-6Y5V474Z16PT	20	27	C
	C257	2892 0407	Chip	GR40CH270J50PT	10	10	C
	C259	2897 0539	Chip	GR40W5R223K50PT	10	12	C
	C261	2892 0890	Chip	GR40PH560J50PT	20	13	C
	C262	2892 0407	Chip	GR40CH270J50PT	10	10	C
	C263	2892 0890	Chip	GR40PH560J50PT	20	13	C
	C264	2892 0491	Chip	GR40CH020C50PT	20	3	C
	C265	2892 0059	Chip	GR40Y5V103Z50PT	10	9	C
	C290	2892 0318	Chip	GR40CH820J50PT	10	11	C
	C291	2897 0371	Chip	GR40CH200J50PT	10	6	C
	C301	2897 1827	Chip tantalum	EMK316B474K-T	20	22	C
	C305	2803 6155	Electrolytic	16RV2-10-T	20	19	C
N	C306	2803 6330	Electrolytic	25RV2-4R7-T	20	18	C
	C309	2807 6553	Electrolytic	6.3RV2-47-T	20	22	C
	C335	2892 0016	Chip	GR40W5R102K50PT	10	11	C
	C339	2892 0016	Chip	GR40W5R102K50PT	10	11	C
	C340	2892 0083	Chip	GR40W5R103K50PT	10	14	C
	C345	2897 0112	Chip	GR40W5R562K50PT	20	12	C
	C346	2897 0973	Chip	GR40W5R683K25PT	10	16	C
	C347	2897 0973	Chip	GR40W5R683K25PT	10	16	C
	C350	2892 0326	Chip	GR40CH101J50PT	10	11	C
	C351	2897 0245	Chip	GR40CH180J50PT	20	6	C
	C545	2897 0693	Chip	GR40W5R333K25PT	10	12	C
	C550	2897 0021	Chip	GR40Y5V683Z50PT	20	27	C
	C600	2803 6155	Electrolytic	16RV2-10-T	20	19	C

Notes: N – New parts  
M – Minimum order/supply quantity  
R – Rank

Linear PCB Assembly No. 2

N	Item	Code No.	Parts Name	Specification	M	FOB Japan N.R.Yen Unit Price	R
N	C603	2828 5552	Electrolytic	6.3RV2-100-T	20	24	C
N	C606	2828 5552	Electrolytic	6.3RV2-100-T	20	24	C
	C630	2892 0059	Chip	GR40Y5V103Z50PT	10	9	C
	C642	2892 0040	Chip	GR40Y5V104Z25PT	10	14	C
	C700	2807 6553	Electrolytic	6.3RV2-47-T	20	22	C
	C740	2892 0040	Chip	GR40Y5V104Z25PT	10	14	C
	C741	2892 0040	Chip	GR40Y5V104Z25PT	10	14	C
	C742	2892 0040	Chip	GR40Y5V104Z25PT	10	14	C
	C750	2892 0300	Chip	GR40CH470J50PT	10	10	C
	C751	2892 0300	Chip	GR40CH470J50PT	10	10	C
	C755	2897 0469	Chip	GR40UJ470J50PT	20	7	C
	C756	2892 0059	Chip	GR40Y5V103Z50PT	10	9	C
	C760	2892 0237	Chip	GR40W5R222K50PT	20	9	C
	C761	2892 0059	Chip	GR40Y5V103Z50PT	10	9	C
	C765	2892 0059	Chip	GR40Y5V103Z50PT	10	9	C
	C776	2892 0059	Chip	GR40Y5V103Z50PT	10	9	C
N	C806	2807 7015	Electrolytic	50RV2-3R3-T	20	18	C
N	C808	2807 6735	Electrolytic	50RV2-2R2-T	20	18	C
	C810	2807 6567	Electrolytic	50RV2-1-T	20	19	C
	C830	2892 0040	Chip	GR40Y5V104Z25PT	10	14	C
	C831	2892 0040	Chip	GR40Y5V104Z25PT	10	14	C
	C832	2892 0040	Chip	GR40Y5V104Z25PT	10	14	C
	C835	2892 0040	Chip	GR40Y5V104Z25PT	10	14	C
	C840	2897 0595	Chip	GR40W5R273K50PT	10	12	C
	C845	2892 0288	Chip	GR40CH100D50PT	10	10	C
<b>Connectors</b>							
	CN700	3501 3234	Connector	52030-2020	5	85	C
N	CN701	3501 7182	Connector	52287-0411	20	22	C
<b>Diodes</b>							
	D100	2390 1176	Chip	MA152WK- (TX)	20	8	C
	D150	2390 1176	Chip	MA152WK- (TX)	20	8	C
	D152	2390 1176	Chip	MA152WK- (TX)	20	8	C
	D155	2390 1302	Chip	MA153A- (TX)	10	21	C
	D180	2390 1568	Chip	SC015-2-TE12RA	20	19	C
	D500	2360 1344	Chip	MA3330-M (TX)	20	15	C
	D700	2390 0469	Chip	MA157A- (TX)	20	19	C
	D703	2390 0469	Chip	MA157A- (TX)	20	19	C
	D705	2390 1358	Vari-cap	MA329- (TX)	10	30	C
	D803	2390 0469	Chip	MA157A- (TX)	20	19	C
	D805	2390 1253	Chip	MA152WA- (TX)	20	8	C
<b>Filters and Traps</b>							
	F200	3025 0189	SAW filter	SAF38.9MZ60Z	1	150	C
	F201	3025 0728	SIF filter	SFSL5.5MDB12	1	33	C
	F202	3851 1148	Ceramic discriminator	CDSL5.5MC30B12	1	45	C
<b>Fuse</b>							
	FU100	3632 0245	Fuse	ATSCR0.80A	1	58	B
<b>Oscillator</b>							
N	H300	2590 0749	Crystal oscillator	HC-49U-C	1	110	C
<b>ICs</b>							
	IC200	2114 1827	Linear	M51348FP-T1	1	190	B
N	IC300	2114 3311	Linear	M52045FP-T1	1	300	B
	IC500	2114 2842	Linear	MSC1169MS-KR1-620	1	120	B
	IC600	2114 2464	Linear	NJM2070M-T1	1	65	B
N	IC700	2011 2695	Linear	MSM6625-01GSK-640E	1	490	B

Notes: N – New parts  
M – Minimum order/supply quantity  
R – Rank

Linear PCB Assembly No. 3

N	Item	Code No.	Parts Name	Specification	M	FOB Japan N.R.Yen Unit Price	R
	IC800	2116 0119	OP AMP	BA10358F-T1	1	39	B
<b>Jacks</b>							
	JK100	3501 6846	Jack	HEC2500-010110	1	35	C
	JK200	3501 5439	Jack	HSJ1456-01-210	1	27	C
	JK600	3501 5439	Jack	HSJ1456-01-210	1	27	C
<b>Inductors</b>							
N	L101	3013 1379	Inductor	LEM4532-101K-TP	20	24	C
N	L102	3013 1379	Inductor	LEM4532-101K-TP	20	24	C
N	L200	3013 1393	Chip	LK2125-R82K-TP	20	24	C
N	L202	3013 1463	Chip	LEM3225-100J-TP	20	25	C
	L700	3013 1281	Chip	MMZ2012S601A-TP	10	26	C
N	L705	3013 1463	Chip	LEM3225-100J-TP	20	25	C
<b>Transistors</b>							
	Q100	2210 8026	Chip	2SB709A-R (TX)	10	23	C
	Q101	2230 7011	Chip	2SD601A-R (TX)	10	22	C
	Q111	2253 0308	Chip	2SD1119-R (TX)	10	37	C
	Q200	2252 0707	Chip	2SC4238- (TX)	10	17	C
	Q300	2210 8026	Chip	2SB709A-R (TX)	10	23	C
	Q800	2230 7011	Chip	2SD601A-R (TX)	10	22	C
	Q801	2210 8026	Chip	2SB709A-R (TX)	10	23	C
	Q802	2230 7011	Chip	2SD601A-R (TX)	10	22	C
	Q803	2230 7011	Chip	2SD601A-R (TX)	10	22	C
	Q804	2230 7011	Chip	2SD601A-R (TX)	10	22	C
	Q805	2253 0476	Chip	2SD1149-S (TX)	20	17	C
	Q806	2230 7011	Chip	2SD601A-R (TX)	10	22	C
	Q810	2210 8026	Chip	2SB709A-R (TX)	10	23	C
	Q811	2230 7011	Chip	2SD601A-R (TX)	10	22	C
<b>Resistors</b>							
	R101	2791 1846	Chip	ERJ-6GEYJ153V	20	4	C
	R102	2791 2095	Chip	ERJ-6GEYJ682V	20	3	C
	R103	2797 1589	Chip	ERJ-6GEYJ511V	20	3	C
	R111	2797 0014	Chip	ERJ-6GEYJ821V	20	4	C
	R115	2791 0238	Chip	ERJ-6GEYJ560V	20	3	C
	R117	2792 0110	Chip jumper	ERJ-6GEYOR00V	20	3	C
	R133	2797 0658	Chip	ERJ-6GEYJ220V	20	3	C
	R201	2791 2117	Chip	ERJ-6GEYJ820V	20	4	C
	R202	2791 2095	Chip	ERJ-6GEYJ682V	20	3	C
	R203	2791 0720	Chip	ERJ-6GEYJ222V	20	3	C
	R204	2791 0831	Chip	ERJ-6GEYJ681V	20	4	C
	R205	2797 0658	Chip	ERJ-6GEYJ220V	20	3	C
	R207	2791 1161	Chip	ERJ-6GEYJ151V	10	5	C
	R208	2791 0734	Chip	ERJ-6GEYJ272V	20	3	C
	R209	2791 0313	Chip	ERJ-6GEYJ103V	10	5	C
	R210	2791 0305	Chip	ERJ-6GEYJ472V	20	3	C
	R212	2791 0720	Chip	ERJ-6GEYJ222V	20	3	C
	R215	2791 0769	Chip	ERJ-6GEYJ563V	20	3	C
	R222	2797 0630	Chip	ERJ-6GEYJ470V	20	3	C
	R223	2791 0615	Chip	ERJ-6GEYJ154V	20	3	C
	R224	2797 1127	Chip	ERJ-6GEYK475V	20	3	C
	R229	2791 2176	Chip	ERJ-6GEYJ471V	20	3	C
	R230	2791 1131	Chip	ERJ-6GEYJ271V	20	3	C
	R236	2791 2040	Chip	ERJ-6GEYJ124V	20	3	C
	R239	2791 0734	Chip	ERJ-6GEYJ272V	20	3	C
	R241	2791 1919	Chip	ERJ-6GEYJ274V	20	3	C

Notes: N – New parts  
M – Minimum order/supply quantity  
R – Rank

Linear PCB Assembly No. 4

N	Item	Code No.	Parts Name	Specification	M	FOB Japan N.R.Yen Unit Price	R
	R246	2791 1420	Chip	ERJ-6GEYJ331V	20	6	C
	R247	2791 0815	Chip	ERJ-6GEYJ102V	10	5	C
	R305	2791 0815	Chip	ERJ-6GEYJ102V	10	5	C
	R306	2791 2109	Chip	ERJ-6GEYJ393V	20	3	C
	R307	2791 2176	Chip	ERJ-6GEYJ471V	20	3	C
	R310	2791 1871	Chip	ERJ-6GEYJ474V	20	3	C
	R311	2791 1650	Chip	ERJ-6GEYJ122V	20	3	C
	R312	2791 0815	Chip	ERJ-6GEYJ102V	10	5	C
	R313	2791 0777	Chip	ERJ-6GEYJ104V	10	5	C
	R314	2791 0313	Chip	ERJ-6GEYJ103V	10	5	C
	R322	2791 0607	Chip	ERJ-6GEYJ333V	20	4	C
	R325	2791 1684	Chip	ERJ-6GEYJ183V	20	3	C
	R326	2797 1015	Chip	ERJ-6GEYK225V	20	3	C
	R330	2797 0014	Chip	ERJ-6GEYJ821V	20	3	C
	R331	2791 2176	Chip	ERJ-6GEYJ471V	20	3	C
	R335	2795 3430	Chip	ERJ-6GEYJ223V	20	6	C
	R336	2797 0028	Chip	ERJ-6GEYJ683V	20	3	C
	R342	2795 3430	Chip	ERJ-6GEYJ223V	20	6	C
	R343	2795 3430	Chip	ERJ-6GEYJ223V	20	6	C
	R500	2791 1390	Chip	ERJ-6GEYJ473V	10	5	C
	R501	2791 0769	Chip	ERJ-6GEYJ563V	20	3	C
	R502	2791 1901	Chip	ERJ-6GEYJ184V	20	3	C
	R541	2795 3430	Chip	ERJ-6GEYJ223V	20	6	C
	R545	2791 1871	Chip	ERJ-6GEYJ474V	20	3	C
	R550	2791 2079	Chip	ERJ-6GEYJ562V	20	3	C
	R606	2797 2345	Chip	ERJ-8GEYK4R7V	20	2	C
	R607	2797 2345	Chip	ERJ-8GEYK4R7V	20	2	C
	R610	2791 2079	Chip	ERJ-6GEYJ562V	20	3	C
	R611	2797 3297	Chip	ERJ-6GEYJ911V	20	3	C
	R615	2791 0742	Chip	ERJ-6GEYJ332V	10	5	C
	R641	2791 0777	Chip	ERJ-6GEYJ104V	10	5	C
	R645	2797 0630	Chip	ERJ-6GEYJ470V	20	3	C
	R700	2792 0110	Chip jumper	ERJ-6GEYOR00V	20	3	C
	R703	2797 0945	Chip	ERJ-6GEYJ105V	20	3	C
	R704	2791 0607	Chip	ERJ-6GEYJ333V	20	4	C
	R705	2791 0769	Chip	ERJ-6GEYJ563V	20	3	C
	R718	2792 0110	Chip jumper	ERJ-6GEYOR00V	20	3	C
	R719		Not used				
	R725	2797 0245	Chip	ERJ-6GEYJ181V	20	2	C
N	R726	2797 3605	Chip	ERJ-6GEYF821V	20	3	C
	R727	2797 1904	Chip	ERJ-6GEYF102V	20	3	C
	R730	2791 2079	Chip	ERJ-6GEYJ562V	20	3	C
	R733	2791 0777	Chip	ERJ-6GEYJ104V	10	5	C
	R734	2791 0607	Chip	ERJ-6GEYJ333V	20	4	C
	R738	2791 1871	Chip	ERJ-6GEYJ474V	20	3	C
	R740	2791 1633	Chip	ERJ-6GEYJ123V	20	3	C
	R808	2791 1846	Chip	ERJ-6GEYJ153V	20	4	C
	R809	2791 1846	Chip	ERJ-6GEYJ153V	20	4	C
	R810	2791 1846	Chip	ERJ-6GEYJ153V	20	4	C
	R815	2791 0305	Chip	ERJ-6GEYJ472V	20	3	C
	R816	2795 3430	Chip	ERJ-6GEYJ223V	20	6	C
	R817	2795 3430	Chip	ERJ-6GEYJ223V	20	6	C
	R819	2797 1358	Chip	ERJ-6GEYJ203V	20	3	C
	R820	2791 1901	Chip	ERJ-6GEYJ184V	20	3	C

Notes: N – New parts  
M – Minimum order/supply quantity  
R – Rank

Linear PCB Assembly No. 5

N	Item	Code No.	Parts Name	Specification	M	FOB Japan N.R.Yen Unit Price	R
N N	R821	2797 0615	Chip	ERJ-6GEYJ154V	20	3	C
	R822	2797 1358	Chip	ERJ-6GEYJ203V	20	3	C
	R824	2797 3612	Chip	ERJ-6GEYF823V	20	3	C
	R825	2797 3598	Chip	ERJ-6GEYF684V	20	3	C
	R827	2791 0607	Chip	ERJ-6GEYJ333V	20	4	C
	R830	2797 0679	Chip	ERJ-6GEYJ224V	20	3	C
	R833	2795 3430	Chip	ERJ-6GEYJ223V	20	6	C
	R834	2791 0777	Chip	ERJ-6GEYJ104V	10	5	C
	R835	2797 1491	Chip	ERJ-6GEYF103V	20	5	C
	R836	2797 1491	Chip	ERJ-6GEYF103V	20	5	C
<b>Switch</b>							
N	SW100	3412 0938	Slide switch	ESD-11V231	1	45	C
<b>Coils and Converter</b>							
	T100	3065 0469	DC-DC converter	LC12U-31	1	71	C
	T200	3841 0700	Coil	5KAC-03A	1	60	C
	T201	3841 0700	Coil	5KAC-03A	1	60	C
<b>Tuner</b>							
	TU200	1013 5315	Tuner	TEPE5-01	1	820	C
<b>Variable resistors</b>							
	VR100	2775 1316	Chip semi-fixed resistor	EVM-1SSW50B53	1	27	C
	VR200	2775 1211	Chip semi-fixed resistor	EVM-1SSW50B54	1	27	C
	VR300	2775 1323	Chip semi-fixed resistor	EVM-1SSW50B15	1	26	C
	VR301	2775 1211	Chip semi-fixed resistor	EVM-1SSW50B54	1	27	C
	VR600	2765 0616	Volume	RK09H11T-10KB	1	60	C
	VR700	2775 1323	Chip semi-fixed resistor	EVM-1SSW50B15	1	26	C
	VR800	2765 1232	Volume	RK09H11T-100KA	10	47	C

Notes: N – New parts  
M – Minimum order/supply quantity  
R – Rank

**BL PCB ASSEMBLY**

N	Item	Code No.	Parts Name	Specification	M	FOB Japan N.R.Yen Unit Price	R
<b>Capacitors</b>							
	C925	2825 0301	TF	ECQ-V1H184JZ	20	26	C
	C927	2813 1743	Ceramic	DE0905SL181J2K	20	16	C
<b>Fuses</b>							
	FU900	3632 0308	Temperature	EYP-1BF102L	1	27	B
	FU901	3632 0308	Temperature	EYP-1BF102L	1	27	B
<b>Coil</b>							
	L950	3013 0756	Choke	RCH-875-101K	5	55	C
<b>Transistors</b>							
	Q950	2253 0287	Chip	2SD965-R	10	37	C
	Q951	2253 0287	Chip	2SD965-R	10	37	C
<b>Resistor</b>							
	R950	2609 0266	Chip	ERD-S2TJ821A	20	2	C
<b>Switches</b>							
N	SW700	3412 1029	Switch	SKHHAL	20	12	C
N	SW701	3412 1029	Switch	SKHHAL	20	12	C
<b>Transformer</b>							
	T950	3012 1001	Inverter	NT-04	1	190	C

Notes: N – New parts  
M – Minimum order/supply quantity



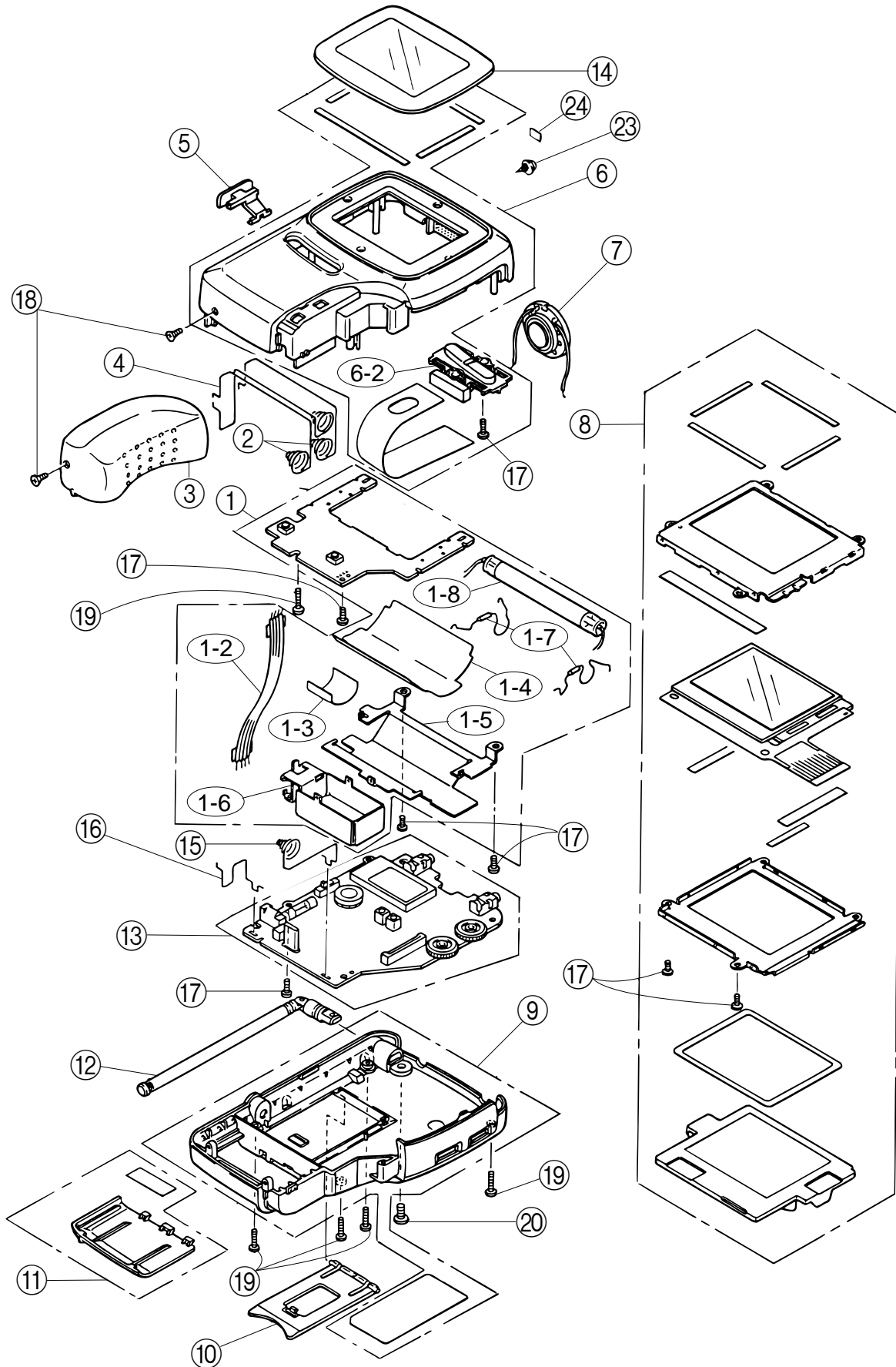
# MECHANICAL PARTS LIST

N	Item	Code No.	Parts Name	Specification	I	N	M	FOB Japan N.R.Yen Unit Price	R
N	1	6608 7228	BL ass'y	K211111A*1	1	1	1	1,000	A
N	1-2	6608 0170	Flat cable A-K541	K411565-1	1	1	1	31	C
	1-3	6607 0690	Insulation sheet D-K508	K410441-3	1	1	1	7	C
N	1-4	6608 6280	Reflection sheet K526	K41861-1	1	1	1	28	C
N	1-5	6608 6270	Shield case D-K526	K211007-1	1	1	1	47	C
N	1-6	6608 6240	Shield case C-K526	K311294-1	1	1	1	44	C
	1-7	3632 0308	Temperature fuse	EYP-1BF102L	2	2	1	27	B
	1-8	3851 1484	Fluorescent lamp	8.76AD1P2-CA11	1	1	1	340	A
N	2	6608 6300	Battery spring C-K526	K311313-1	2	2	1	36	C
N	3	6608 6200	Side case A-K526	K110691-1	1	1	1	34	C
N	4	6608 6310	Battery spring D-K526	K311314-1	1	1	1	34	C
N	5	6608 6560	SW knob A-K526	K311299-1	1	1	1	18	C
N	6	6608 7235	Upper case ass'y	K211107*1	0	1	1	730	C
N	6	6608 7676	Upper case ass'y	K211107*2	1	0	1	580	C
	6-1	6600 2220	Adhesive tape A-K52	K451-5	2	2	10	5	C
N	6-2	6608 6330	T button A-K526	K311318-1	1	1	1	26	C
N	6-3	6608 7271	Adhesive tape A-K502	K410903A-2	2	2	10	3	C
	7	3831 0567	Speaker	2803BFB	1	1	1	150	B
N	8	6608 7231	Display unit	K311437*1	1	1	1	3,000	A
	9	6608 6190	Lower case BAA-K526	K110682-2	0	1	1	300	C
N	9	6608 7600	Lower case IAM-K526	K110682-3	1	0	1	300	C
	10	6606 2130	Stand A-K331	K310518-1	1	1	10	36	C
N	11	6608 7234	Battery cover ass'y	K411910*1	1	1	1	23	C
	12	3851 1043	Rod antenna	YH790323	1	1	1	170	C
N	13	6608 8560	PCB-K526C-L unit	K311439*1	1	1	1	8,130	A
N	14	6608 6230	Display plate CDA-K526	K411831-1	0	1	1	230	C
N	14	6608 7690	Display plate IAM-K526	K411831-2	1	0	1	230	C
N	15	6608 6360	Battery spring A-K526	K311321-1	1	1	1	24	C
N	16	6608 6370	Battery spring B-K526	K411830-1	1	1	1	30	C
	17	5860 0420	Precision (+) tapping screw	PS3,1.7x4.0Ni	7	7	50	3	X
	18	5860 2380	Precision (+) tapping screw	PS3,1.7x3.5Bk	2	2	50	3	X
	20	5860 1449	Precision (+) tapping screw	PS3,1.7x8.0Bk	5	5	50	3	X
	21	6605 0011	Screw A-K334	K410096A-1	1	1	20	3	X
N	22	6608 7620	Rating plate NAM-K526	K411847-4	0	1	20	9	X
N	22	6608 7630	Rating plate IAM-K526	K411847-5	1	0	20	9	X
	23	6605 8941	Jack cap A-K338V	K310357A-1	1	1	20	19	C
N	24	6608 7650	Seal A-K526	K411926-1	1	1	20	3	X

Notes: N – New parts  
Q – Quantity

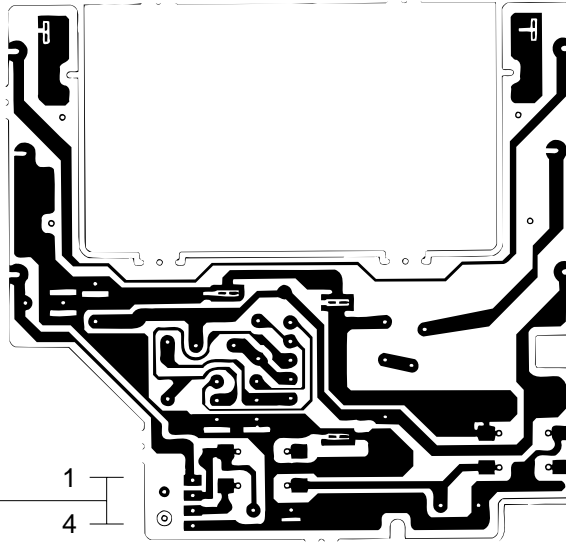
I – TV-1750I  
N – TV-1750N  
M – Minimum order/supply quantity

# EXPLODED VIEW / DISASSEMBLY



# WIRING DIAGRAM

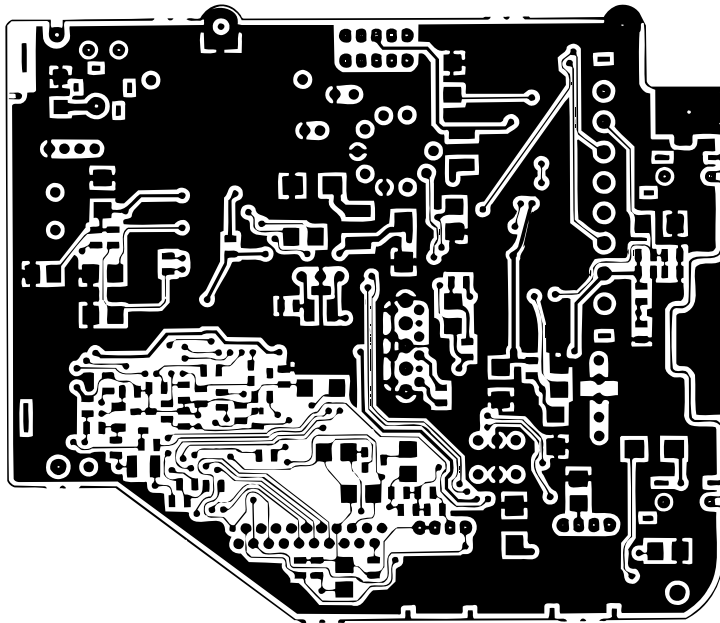
BL PCB



1  
4

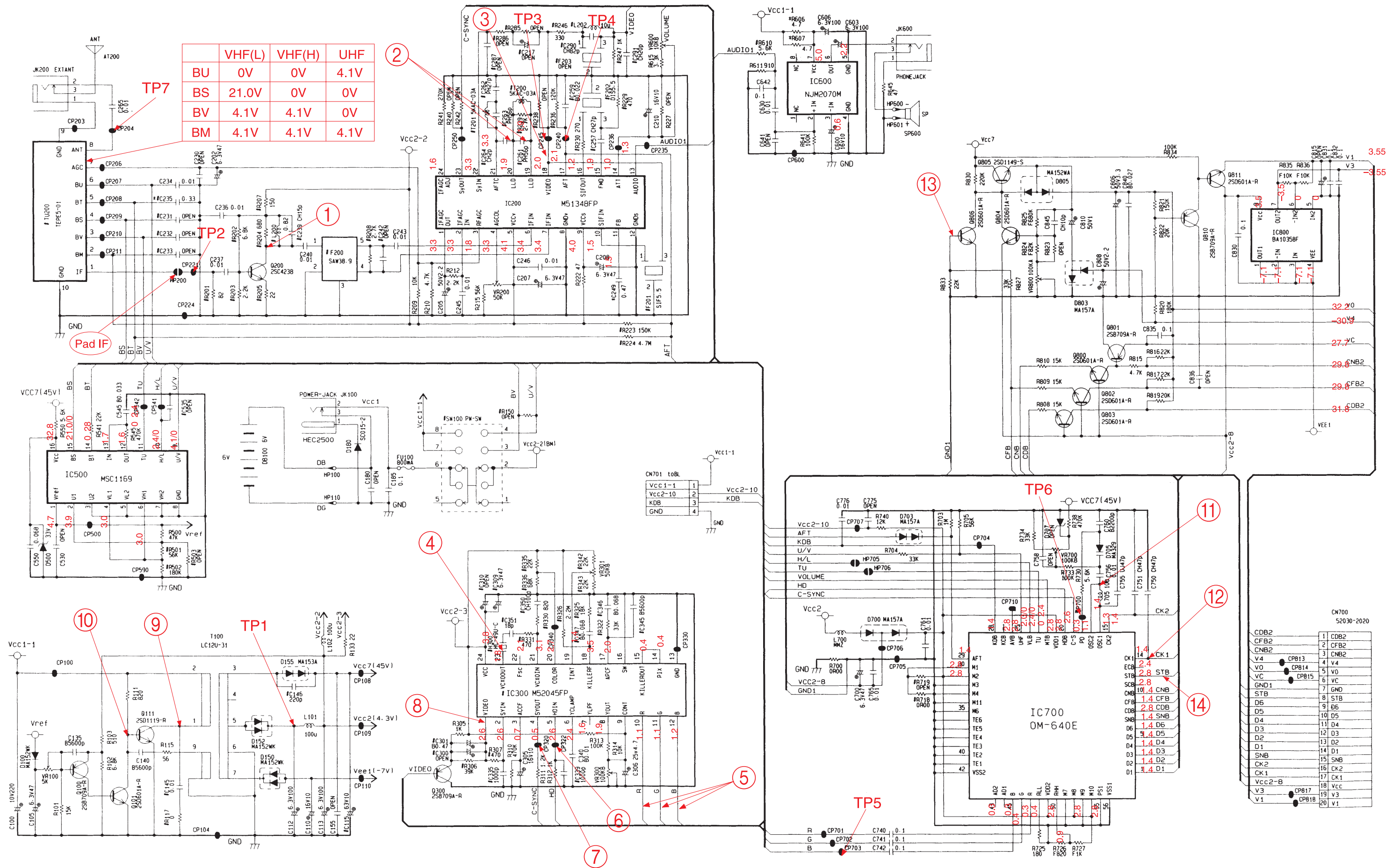
4  
1

Linear PCB



# SCHEMATIC DIAGRAMS AND WAVEFORMS

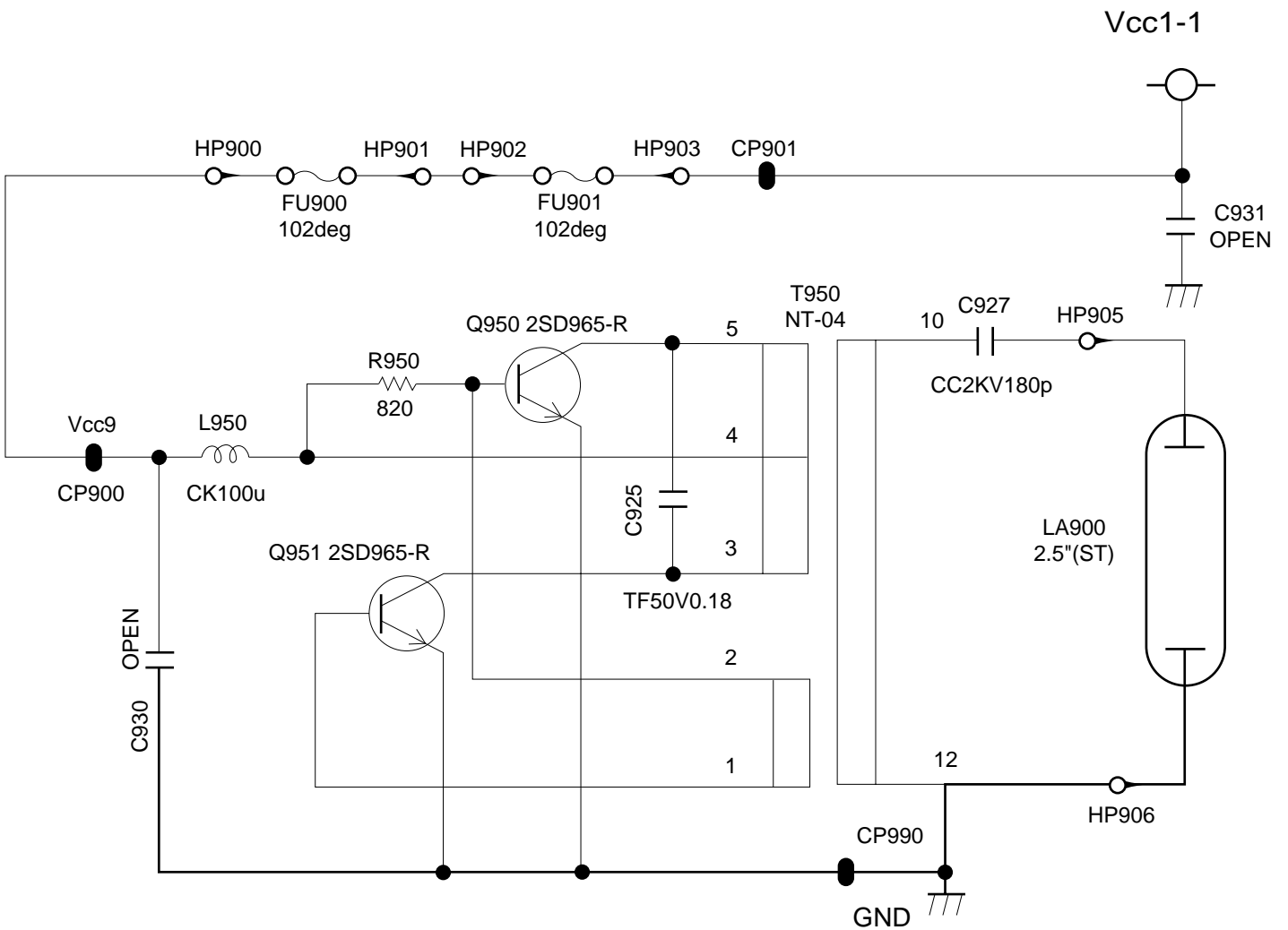
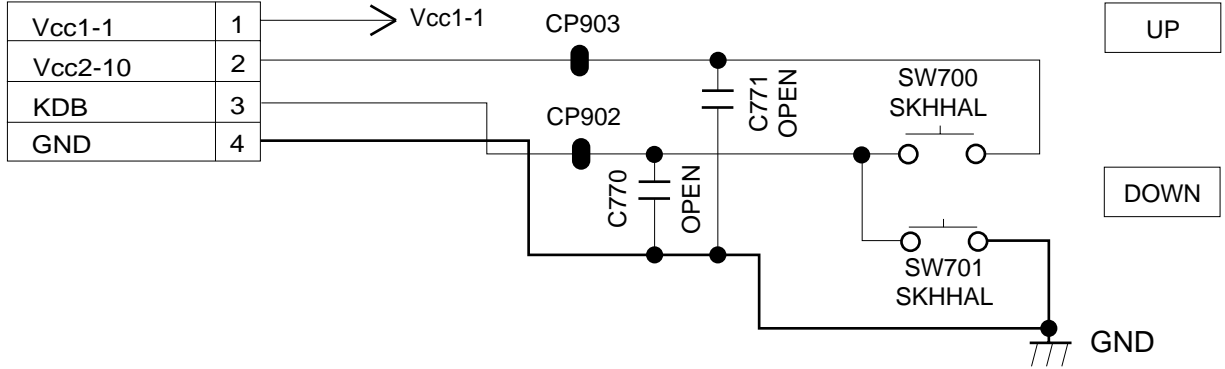
## Linear PCB



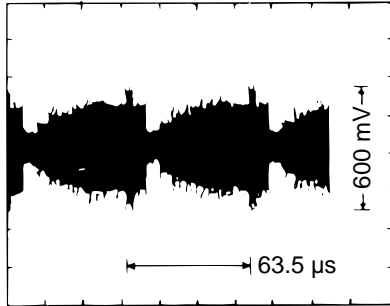
# BL PCB

HP950 FromL

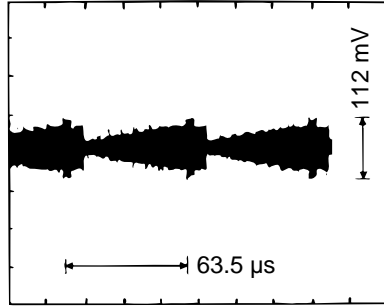
Vcc1-1	1
Vcc2-10	2
KDB	3
GND	4



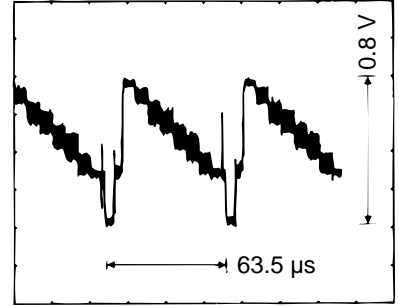
# WAVEFORMS



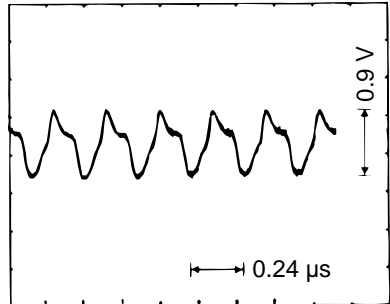
① Q200 Collector



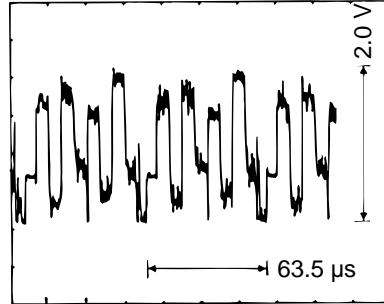
② IC200 Pin 19



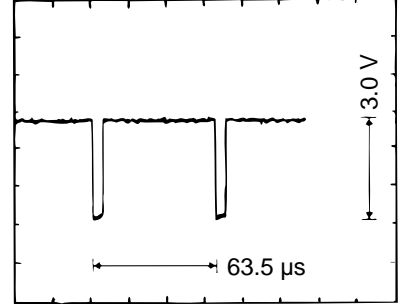
③ IC200 Pin 18



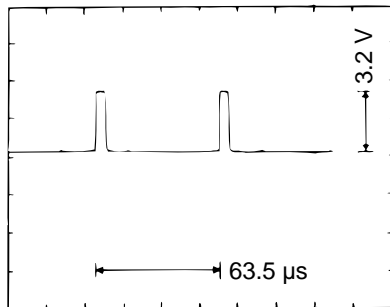
④ IC300 Pin 23



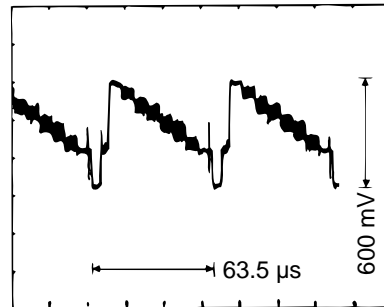
⑤ IC300 Pins 10, 11, 12



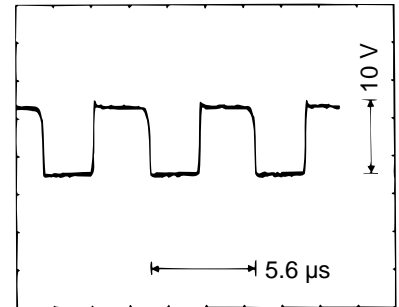
⑥ IC300 Pin 5



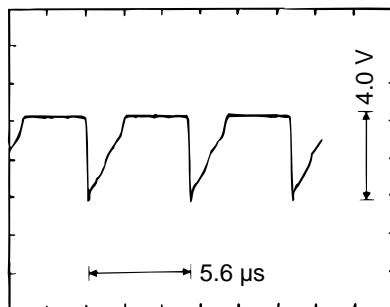
⑦ IC300 Pin 4



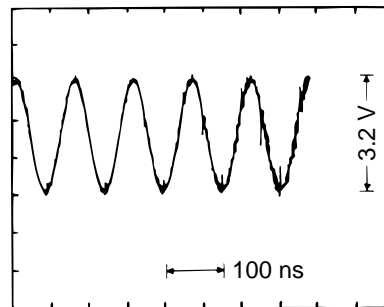
⑧ IC300 Pin 1



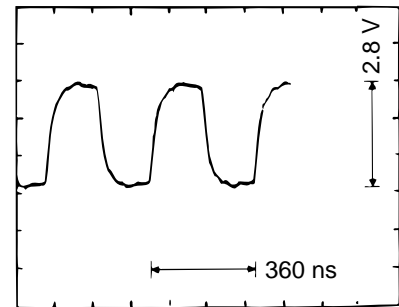
⑨ Q111 Collector



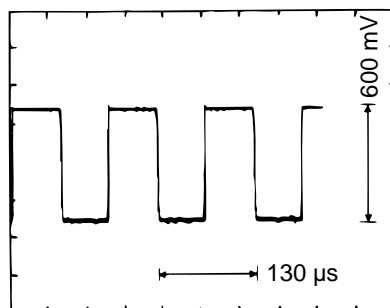
⑩ Q111 Base



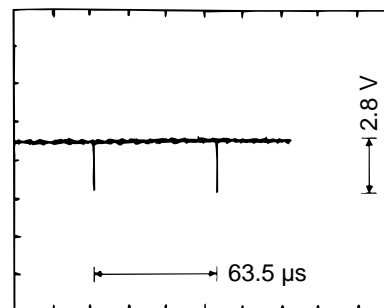
⑪ IC700 Pin 17



⑫ IC700 Pin 14



⑬ Q806 Base



⑭ IC700 Pin 12

**CASIO COMPUTER CO.,LTD.**  
Service Division

8-11-10, Nishi-Shinjuku  
Shinjuku-ku, Tokyo 160, Japan  
Telephone: 03-3347-4926