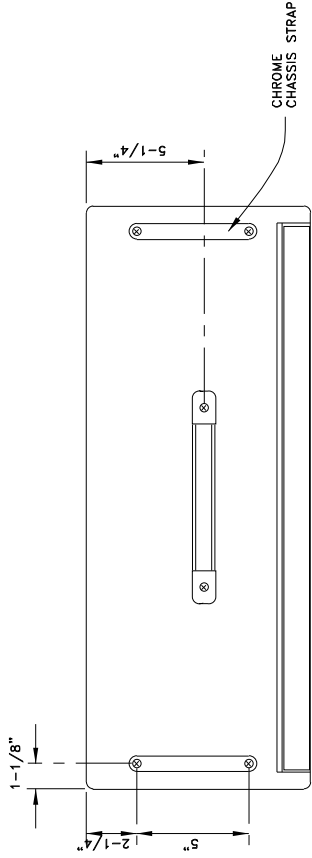
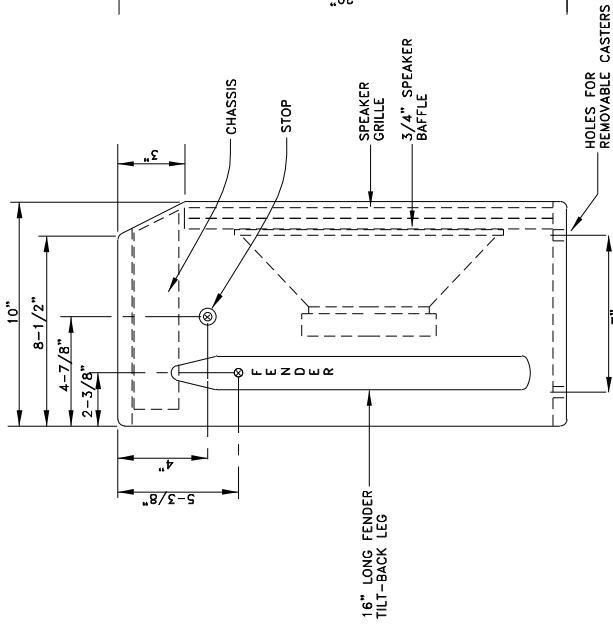


**GENERAL NOTES:**

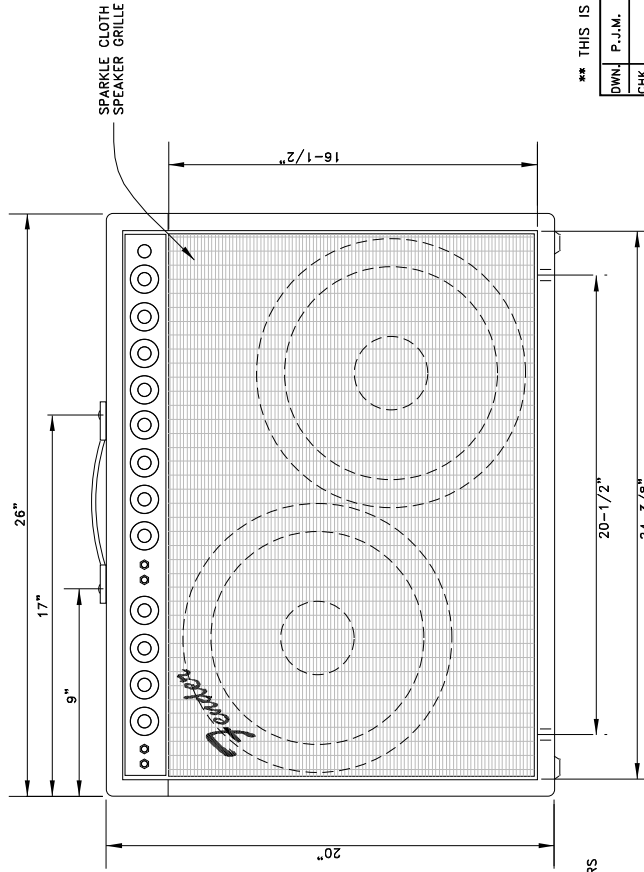
1. SPEAKER GRILLE IS APPROX 1/4" BACK FROM FRONT EDGE OF SPEAKER CABINET.
2. BOTTOM CORNERS HAVE CHROME AMP CAB CORNER PIECES.
3. FOUR CHROME GLIDES ARE ON BOTTOM AT THE CORNERS.
4. CABINET IS CONSTRUCTED OF 3/4" THICK PLYWOOD.
5. SPEAKER BAFFLE IS CONSTRUCTED OF 3/4" THICK PARTICLE BOARD.
6. SPEAKER CABINET IS COVERED WITH BLACK "TOLEX".
7. SPEAKER CABINET REAR PIECES CAN BE MADE FROM 1/4" PLYWOOD.



TOP VIEW - TWIN REVERB  
SCALE: 3"=1"



LEFT SIDE VIEW - TWIN REVERB  
SCALE: 3"=1"



FRONT VIEW - TWIN REVERB  
SCALE: 3"=1"

\*\* THIS IS NOT AN OFFICIAL FENDER DRAWING \*\*

DATE	P.-I.M.	DATE	<b>Fender</b> MUSICAL INSTRUMENTS SANTA ANA, CALIFORNIA
DATE	CHK.	DATE	DWG. TITLE
DATE	APPD.	DATE	SPEAKER CABINET
DATE	APPD.	DATE	PLAN - TWIN REVERB, TUBE TYPE
DATE	APPD.	DATE	
APPROVAL-	REL. NO.	SIZE	DWG. NO.
10-18-02	D	D	000001
SCALE: 3"=1"	MODEL	TWIN REVERB	SHEET
	1000	TUBE TYPE	1 OF 1
			REV. A