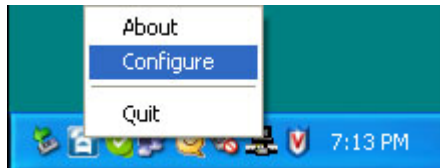


How do I setup the Toll Bypass feature for my DPH-50U?

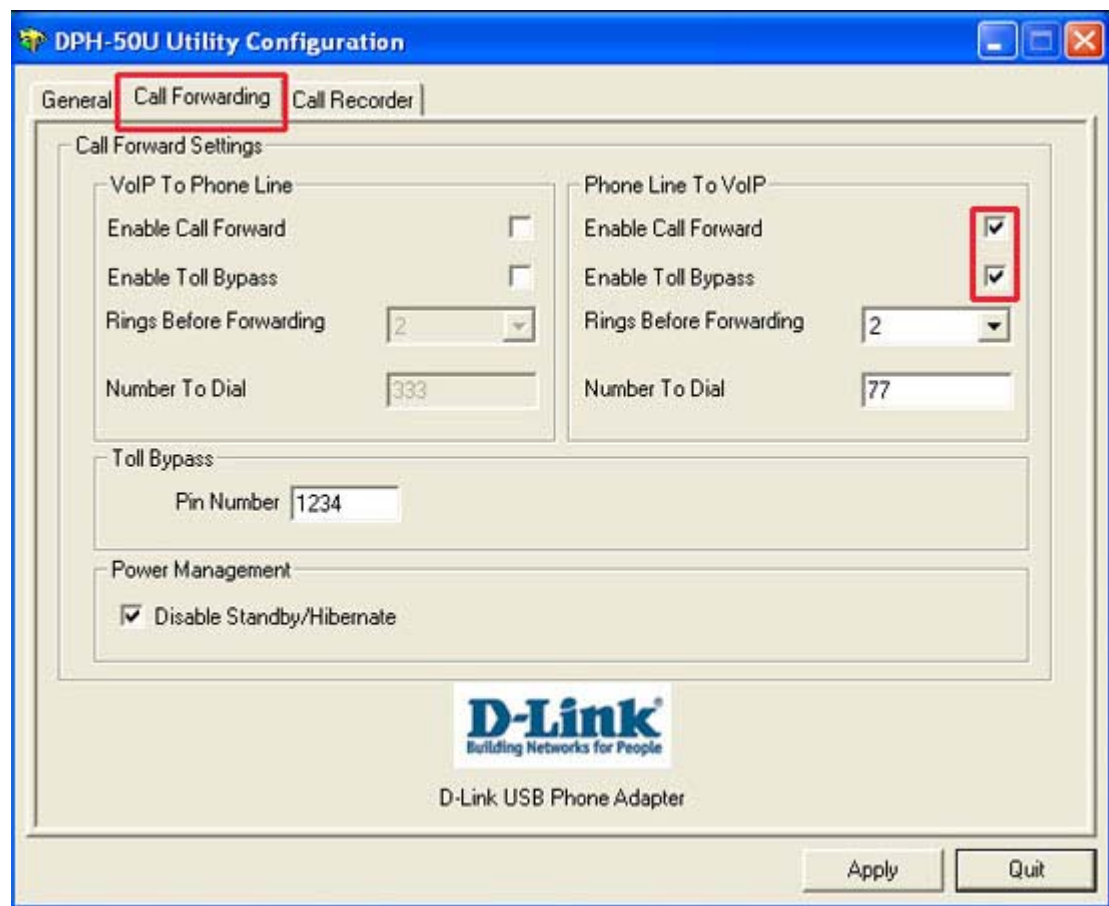
A The Toll Bypass feature allows you to call in from your mobile phone to the computer that the **DPH-50U** is connected to and make a low cost *SkypeOut™* international call. It also allows you to *Skype™* to the computer that the **DPH-50U** is connected to and make a low cost local call over the PSTN line. This is useful if you are traveling abroad and want to make a low cost local call (in the geographical location that the DPH-50U is in).

Step 1 Right-click on the **Skype™ Agent** (blue telephone icon in the System Tray) and select **Configure** as shown below.



Step 2 Click the **Call Forwarding** tab to see the Call Forwarding parameters.

Step 3 In order to enable toll bypass of incoming PSTN calls, under **Phone Line to VoIP settings**, check the **Enable Call Forward** and **Enable Toll Bypass** checkbox.



Step 4 Enter your **PIN**. Click **Apply** and then click **Quit** to save your settings.