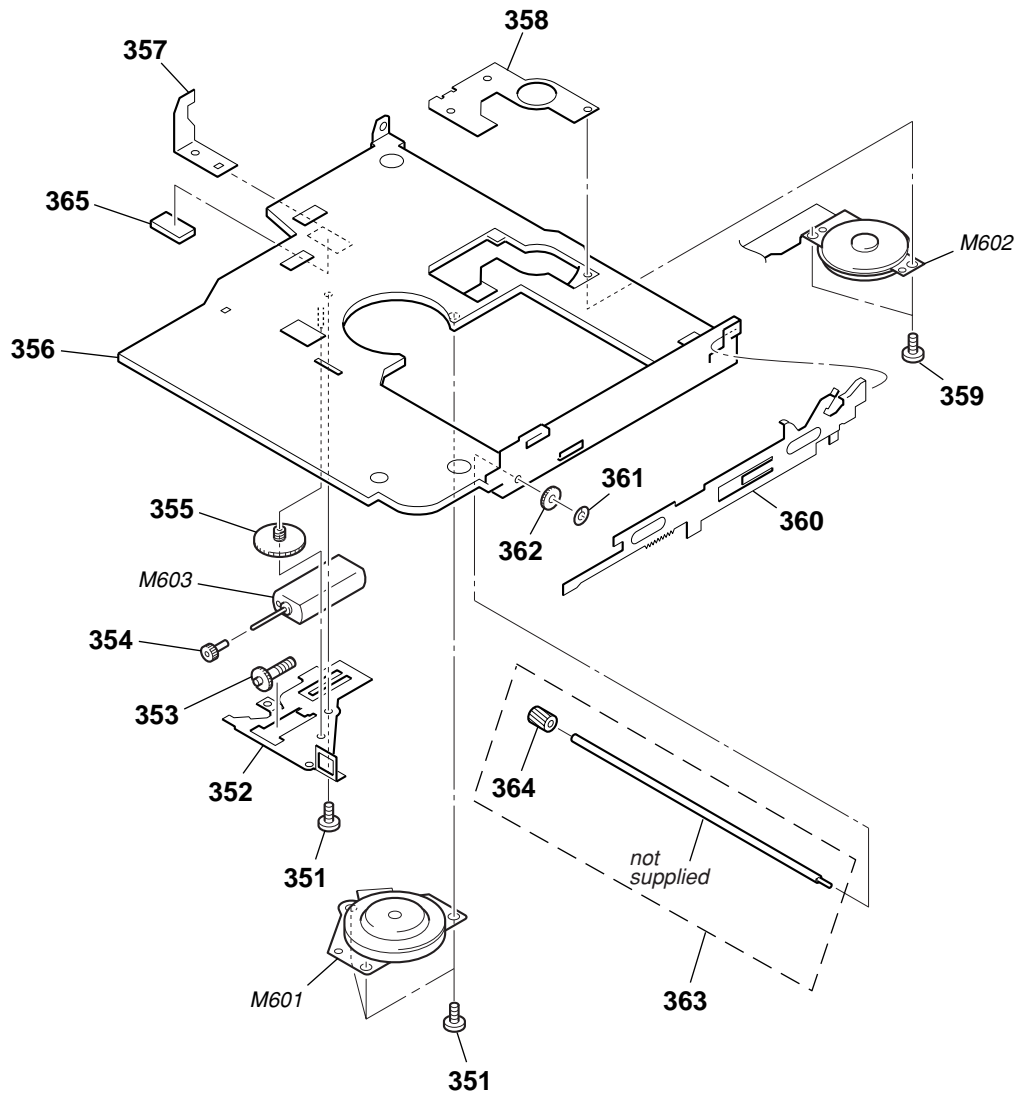


## 7-5. Mechanism Deck Section-2 (MT-MZN710-177)



Ref. No.	Part No.	Description	Remark	Ref. No.	Part No.	Description	Remark
351	3-225-278-12	SCREW, TAPPING		361	3-338-645-31	WASHER (0.8-2.5)	
352	3-235-838-01	COVER, MOTOR		362	4-222-222-01	GEAR (RACK)	
353	3-235-836-01	GEAR (HB)		363	A-3174-089-A	SHAFT BLOCK ASSY, SUB	
354	3-222-544-01	GEAR (HA)		364	4-222-218-02	GEAR (HD)	
355	3-235-835-01	GEAR (HC)		365	3-253-536-01	SPACER (H/J)	
356	3-235-834-01	CHASSIS		M601	8-835-744-21	MOTOR, DC SSM18B (SPINDLE) (WITH TURN TABLE)	
357	3-235-830-01	PLATE, RATCHET		M602	1-763-727-11	MOTOR, DC (SLED) (WITH GEAR)	
358	X-3379-529-4	BASE ASSY, MOTOR		M603	1-763-400-21	MOTOR, DC (OVER WRITE HEAD UP/DOWN)	
359	3-225-996-07	SCREW (M1.4) (EG), PRECISION PAN					
360	3-235-839-01	LEVER (RACK)					