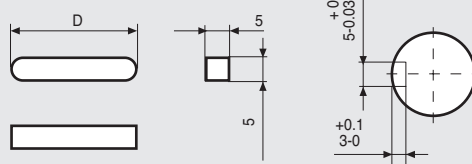


T IS THE EARTH TERMINAL .



MODEL	A	C	D
103 - 8932 - 6451	186.9		32
103 - 8932 - 6421	186.9	30.8	32
103 - 8960 - 6551	245		28

CHARACTERISTICS

MODEL		103 - 8932 - 6451 (103 - 8932 - 6421)	103 - 8960 - 6551
BASIC STEP ANGLE		1.8° ± 0.09°	1.8° ± 0.09°
BIPOLAR PARALLEL CURRENT	(Amp)	12.7	14.1
UNIPOLAR CURRENT	(Amp)	9.0	10.0
RESISTANCE	(Ohm)	0.28	0.28
INDUCTANCE	(mH)	2.4	3.0
BIPOLAR HOLDING TORQUE	(Ncm)	1330	2060
UNIPOLAR HOLDING TORQUE	(Ncm)	1020	1580
ROTOR INERTIA	(Kg ^m 2 x 10 ⁻⁷)	8000	11500
THEORETICAL ACCELERATION	(rad x sec. ⁻²)	16500	17900
BACK E.M.F.	(V/Krpm)	85	120
MASS	(Kg)	7	10.5
PROTECTION DEGREE		IP43	IP43
LEADS CODE		III	III

Codes between brackets refer to double shaft model.

