



Schneider AG

DUAL GmbH

Silvastraße 1  
D-86842 TÜRKEHEIM

Date : 20.12.99

### Service - Info

Unit type : Chassis DTV 101

KD0002K

No.: 207

#### Concern:

The television goes to standby, if you operate it without antenna.

#### Remedy:

Address changing in the service mode

To change a address, go to main service menu.

#### Service-Mode:

Simultaneously press and then release the red and blue button on the transmitter. Simultaneously press within five seconds the buttons "Programme -" and "Programme +" at the local control panel. The main service menu is displayed on the screen with an info box and the buttons which can be selected using the appropriate colour button on the remote control device.

To change a address, go to main service menu and press the blue button on the transmitter (the blue switchboard is not displayed on the screen). A new service menu is displayed on the screen:

SERVICE	
Software version	Divers
Eeprom type	54
Flags	00,0C,0F,0F

Changes can destroy TV-Set!		
NVM-address	[hex]	00
NVM-data	[hex]	54

GEO	VIDEO	CODEINIT
-----	-------	----------

The NVM address and NVM data can be selected with the buttons "↑ / ↓", and changed with the buttons "← / →". Change now by the NVM address "F4" the NVM data from 01 to 00.

#### Attention: The changing of other addresses can effect secondary failure.

After a address changing, press the button "OK" to store it.

Press the button "TV" to leave the service mode.

Modifications reserved !



Schneider AG

DUAL GmbH

Silvastraße 1  
D-86842 TÜRKEHEIM

Date : 20.12.99

### Service - Info

Unit type : Chassis DTV 101

KD0002K

No.: 209

#### Concern:

Reducing of interference pattern by low channels.

#### Remedy:

Following components have to be changed or componentated:

#### Main board:

- The resistor in position R 322 have to be removed, and a damper 1 (resistor 2,2 $\Omega$  + capacitor 100 $\mu$ F/63 V + thermo-shrinkable tubing) have to be soldered in.
- A second damper 2 (resistor 10 $\Omega$  + capacitor 10 $\mu$ F/100V + thermo-shrinkable tubing) parallel to L 208, have to be soldered in.
- At the anode circuit of diode D 303, a ferrite tube have to be componentated.

#### Picture tube board:

- The resistor in position R 1528 and the bridge no. 11 have to be removed, and two coils (470 $\mu$ H / 350mA) have to be soldered in.

Part number:	Damper 1	0101427.001
	Damper 2	0101428.001
	Ferrit tube	0100826
	Coil	0031902

Modifications reserved !



Date : 20.12.99

Service - Info			
Unit type	:	STV 1696.1	Part.-No.: 0075133
		Magnum 85 - 101	0075134
		Palladium 100	0075371
		Magnum 85 - 101	0075700
KD0002K			No.: 210

**Concern:**

After program scanning, the channels 2 untill 10 have no sound.  
(Concern only chassis DTV 101 **Multinorm**, not Euronorm chassis)

**Remedy:**

Address changing in the service mode

To change a address, go to main service menu.

**Service-Mode:**

Simultaneously press and then release the red and blue button on the transmitter. Simultaneously press within five seconds the buttons "Programme -" and "Volume +" at the local control panel. The main service menu is displayed on the screen with an info box and the buttons which can be selected using the appropriate colour button on the remote controle device.

To change a address, go to main service menu and press the blue button on the transmitter (the blue switchboard is not displayed on the screen). A new service menu is displayed on the screen:

SERVICE	
Software version	Divers
Eeprom type	54
Flags	00,0C,0F,0F

Changes can destroy TV-Set!		
NVM-address	[hex]	<b>F6</b>
NVM-data	[hex]	<b>00</b>

GEO	VIDEO	CODEINIT
-----	-------	----------

The NVM address and NVM data can be selected with the buttons "↑ / ↓", and changed with the buttons "← / →". Change now by the NVM address "**F6**" the NVM data from **01 to 00**.

**Attention: The changing of other addresses can effect secondary failure.**

After a address changing, press the button "**OK**" to store and the button "**TV**" to leave service mode. Start the program scanning again.

**NOT FOR  
PUBLIC RELEASE**

**Schneider**  
Schneider AG  
DUAL GmbH  
Silvastraße 1  
D-86842 TÜRKEHEIM

Date : 27.02.98

**Service - Info**

Unit type : Chassis DTV 101

KD0002K

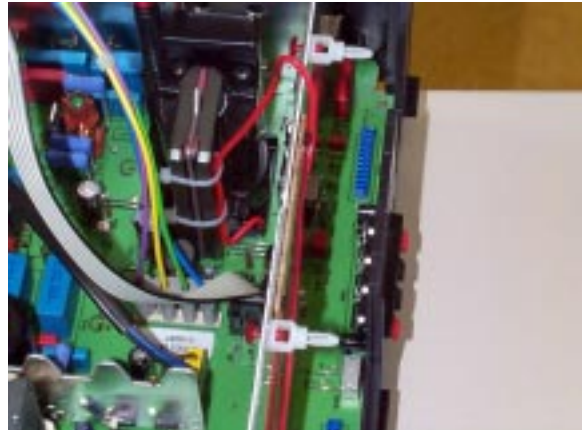
No.: 211

**Concern:**

Reducing of vertical shadows by dark video informations.

**Remedy:**

- ① Change the frame clamp at the right side of the screening from the signal P.C. board through a fixed short ground connector. Solder in a second fixed short ground connector from the left side of the signal P.C. board screening to the frame of tuner.
- ② Control the compensation cable and fix it like the illustration:



The compensation cable, which is soldered in at pin 7 of the diode split transformer, has to be passed through the hole at pin 1 to the ferrit tube. The compensation cable has to be fixed with two cable ties in the middle of the ferrit tube, runned between the cooling shield and the screening of the signal P.C. board and soldered in at the frame of tuner.

**Attention:** To reduce the vertical shadows, the compensation cable has to be layed correctly.

Modifications reserved !

**NOT FOR  
PUBLIC RELEASE**

**dss** Zentral - Kundendienst

**Schneider**

Schneider AG

DUAL GmbH

Silvastraße 1

D-86842 TÜRKEHEIM

Date : 20.12.99

### Service - Info

Unit type : Chassis DTV 101  
KD0002K

No.: 213

#### Concern:

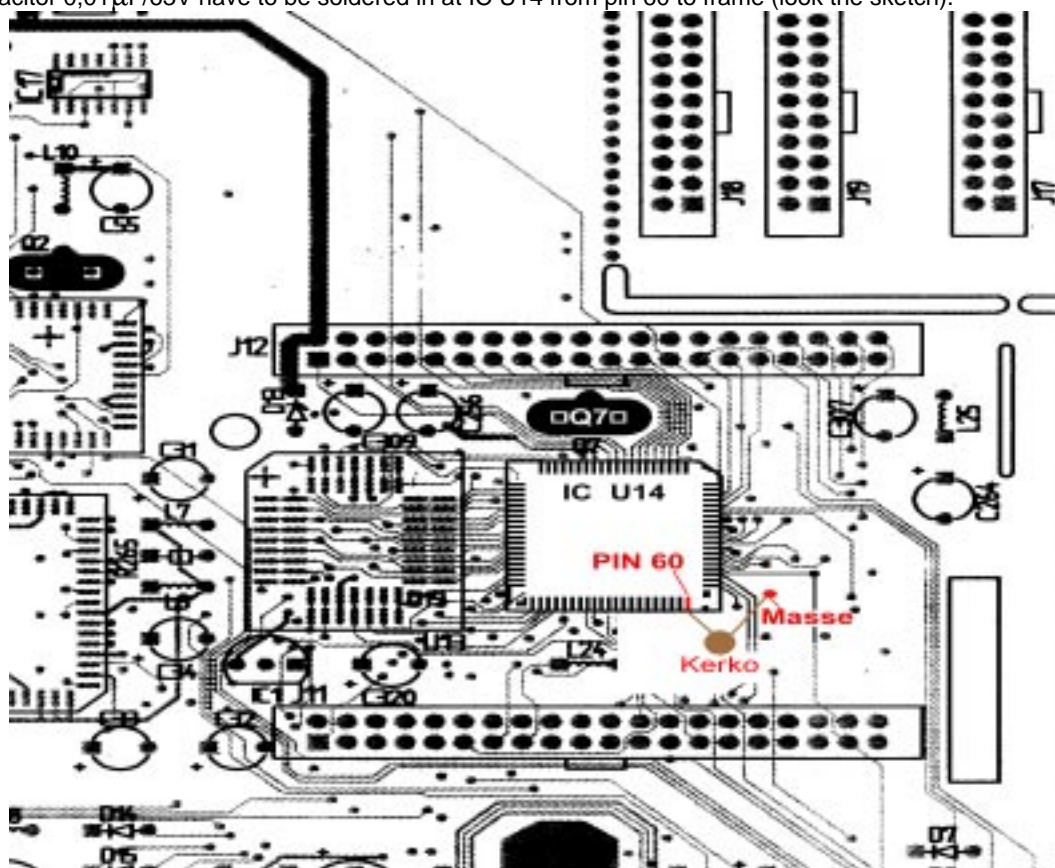
Disturbance at channel 4

#### Remedy:

Following component have to be component additional:

#### Signal P. C. board:

- A capacitor 0,01 $\mu$ F/63V have to be soldered in at IC U14 from pin 60 to frame (look the sketch).



**NOT FOR  
PUBLIC RELEASE**

**dss** Zentral - Kundendienst

**Schneider**

Schneider AG

DUAL GmbH

Silvastraße 1

D-86842 TÜRKEHEIM

Date : 20.12.99

**Service info**

Unit type : Chassis DTV 101

KD0002K

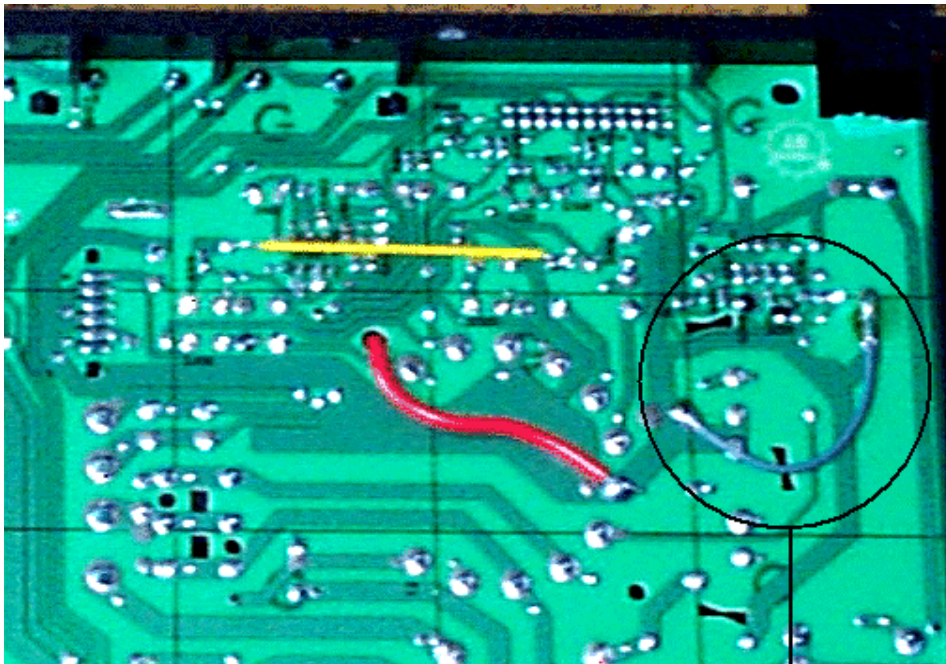
No.: 214

**Concern:**

Vertical interference pattern

**Remedy:**

Extra frame connection cooling plate deflection (see illustration)



Frame connection

Modifications reserved !

**NOT FOR  
PUBLIC RELEASE**

**dss** Zentral - Kundendienst

**Schneider**

Schneider AG

DUAL GmbH

Silvastraße 1

D-86842 TÜRKEIM

Date : 20.12.99

### Service - Info

Unit type: Chassis DTV 101

KD0002K

No.: 222

#### Concern:

Static discharge of diode split transformer - ferrit tube.

#### Remedy:

A short ground connector between the diode split transformer - ferrit tube and the colling shield trough a copper conductor (like illustration).



Part number copper conductor: 0104749

Attention: Modifications are integrated into production.

Modifications reserved !

**NOT FOR  
PUBLIC RELEASE**



**SCHNEIDER**  
Schneider AG      DUAL GmbH  
Silvastraße 1  
D-86842 TÜRKEHEIM

Date : 20.12.99

<b>Service - Info</b>
-----------------------

Unit type : Chassis DTV 101

No.: 233

**Concern:**

Colour defect or faulty degaussing.

**Reason:**

Q103

**Remedy / Change:**

The above declared transistor type triac BTB 08 has to be replaced by type BT137.

Part number transistor Q103 (Triac BT137) :      0100684

Modification reserved !



**SCHNEIDER**  
Schneider AG      DUAL GmbH  
Silvastraße 1  
D-86842 TÜRKHEIM

Date : 20.12.99

<b>Service - Info</b>
-----------------------

Unit type                      : Chassis DTV 101

No.: 234

**Concern:**

Black horizontal stripes.

**Remedy:**

The chip capacitors in position C401 and C403 have to be replaced from a 100nF/25V version into a 220nF/50V version.

Part number chip capacitor 220nF/50V:      0100057

Modifications reserved !



**SCHNEIDER**  
Schneider AG      DUAL GmbH  
Silvastraße 1  
D-86842 TÜRKHHEIM

Date : 09.06.99

### Service - Info

Unit type : Chassis DTV 101

KD0002K

No.: 230

#### Concern:

Faulty horizontal synchronizing at AV mode.

#### Remedy:

From software V 2.5 up it's possible to equalize the horiz. synchronizing in the service mode.

#### Service-Mode:

Simultaneously press and then release the red and blue button on the remote control. Simultaneously press within five seconds the buttons "Programme -" and "Volume+" at the local control panel. The main service menu is displayed on the screen with an info box and the buttons which can be selected using the appropriate colour button on the remote controle device.

#### Service

Software version	2.8
Eeprom type	00
Flags	00.0C.0F.0F
i = Codeinit	

GEO      VIDEO      SETTINGS

After pressing the yellow button on the remote control, a new service menu appears on the screen :

#### SETTINGS

Beam Current Limit	off
Beam Current Limit	0
Tuner,..Mhz-Oscill.	off
Freezetime	35

back

Then adjust with the tuning parameter „Freezetime“ the horz. synchronizing best possible ( Value 30 - 40 ). The tuning parameter can be selected with the buttons “↑ / ↓”, and changed with the buttons “← / →” on the remote control. **Attention: connect the video recorder to the TV set and playback a videotape during the alignment.** After the alignment press the button “OK” to store it. Press the button “TV” to leave the service mode.

**Attention:** If the software version is lower than version V2.5 it's necessary to take an update. Therefore the IC 27C2001 ( part no.: 101357.001 ) in position U 813 has to be changed.

Modifications reserved !

**NOT FOR  
PUBLIC RELEASE**



**SCHNEIDER**

Schneider AG

DUAL GmbH

Silvastraße 1

D-86842 TÜRKHEIM

Date : 08.02.00

### Service - Info

Unit type : Chassis DTV 101

No.: 244

#### Concern:

Breakdown of the vertical output amplifier (IC 401 / TDA 8177 F)

#### Remedy:

- After the breakdown of the vertical output amplifier ( IC 401 / TDA 8177 F ) the soldering connections in the area around the vertical amplifier and the east/west correction have to be observed or soldered again respectively.
- The capacitor 2,2 nF / 100V (part no.: 0061416) has to be componented additional between pin 3 of IC 401 and ground.
- The copper conductor between the diode split transformer - ferrit tube and the cooling shield has to be componented a like the following illustration.



Part number copper conductor: 0104749

Modifications reserved !