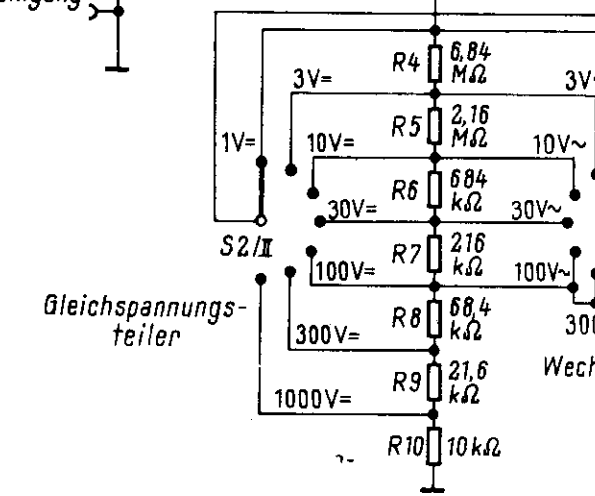
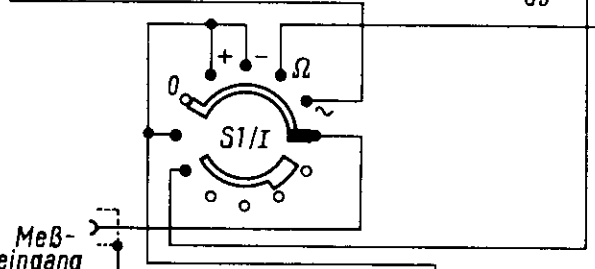
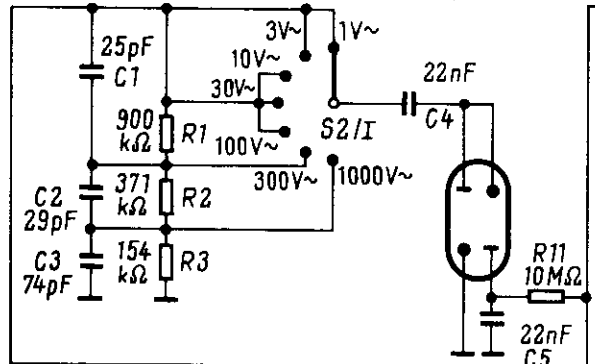
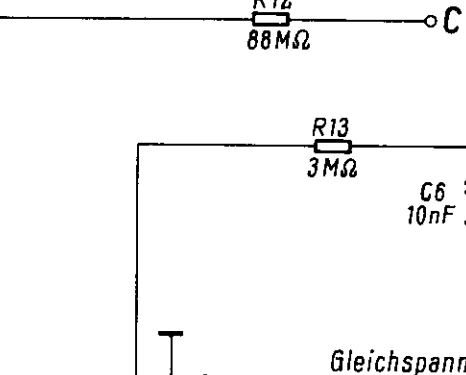
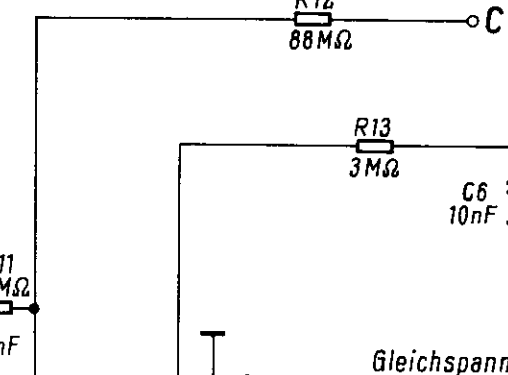


Rö2
EAA 91

Wechselspannungs-Vorteiler



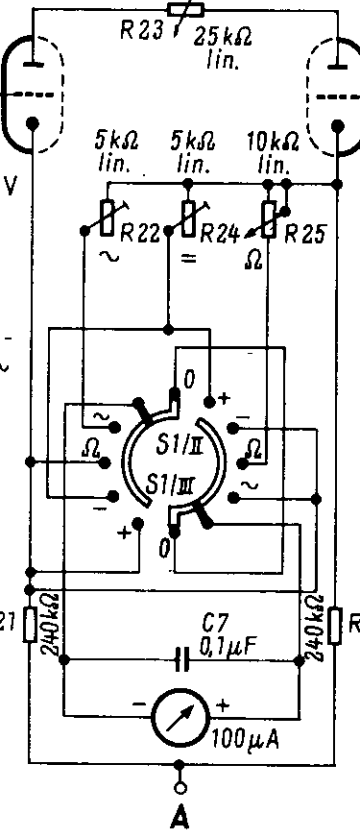
Gleichspannungs-teiler



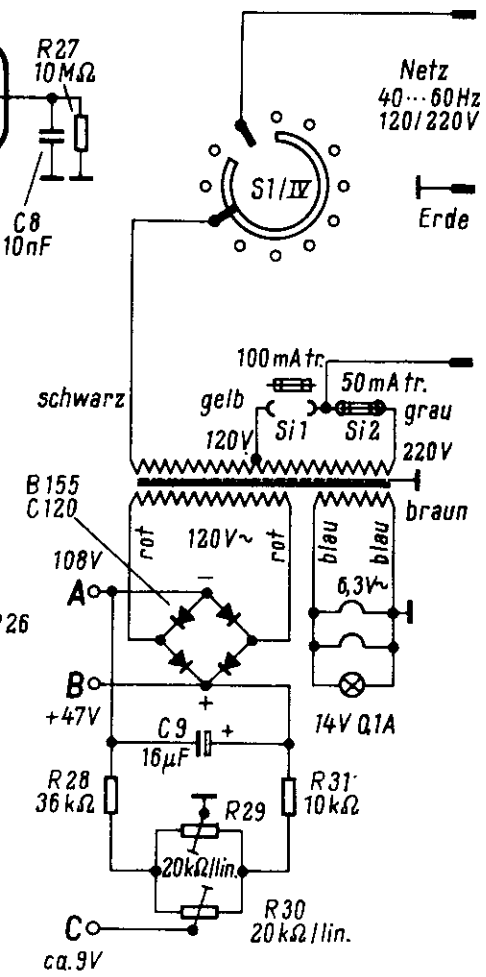
Ohm-teiler

Gleichspannungen
mit Grundig-Röhren-
voltmeter bei 220V~
gegen Masse
gemessen.

Rö1
ECC 82



Lieferbares Zubehör
290 MΩ
30-kV-Prüfspitze
Abgeschirmtes Kabel



Mitteliefertes Zubehör
200 kΩ
Prüfspitze
Prüfspitze
Kabel

Netz
40...60 Hz
120/220V

Erde

