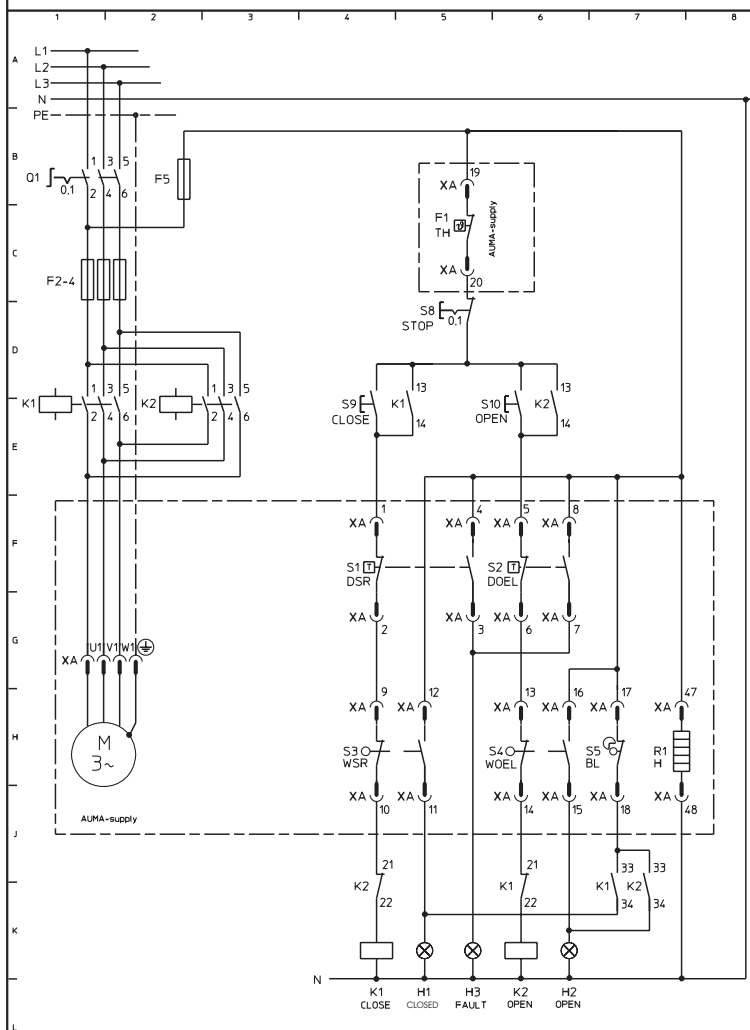




CLOSED Limit seating

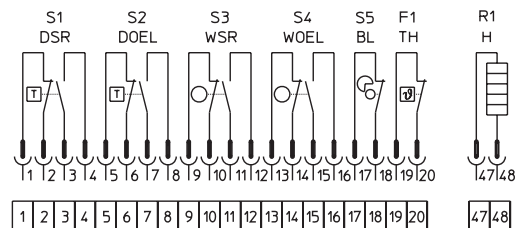


OPEN Limit seating



## Basic equipment

## KMSTP110/001



## Limit switch tripping



CLOSED



OPEN

DSR	1 + 2																		
	3 + 4																		
DOEL	5 + 6																		
	7 + 8																		
WSR	9 + 10																		
	11 + 12																		
WOEL	13 + 14																		
	15 + 16																		

Travel

Contacts closed

Contacts open

DSR and DOEL act as overload protection for the whole travel; they are only tripped when exceeding the set torque.

Wiring diagram for standard version, multi-turn actuator closes valve clockwise. The wiring diagram shows the non-rotating multi-turn actuator in intermediate position.

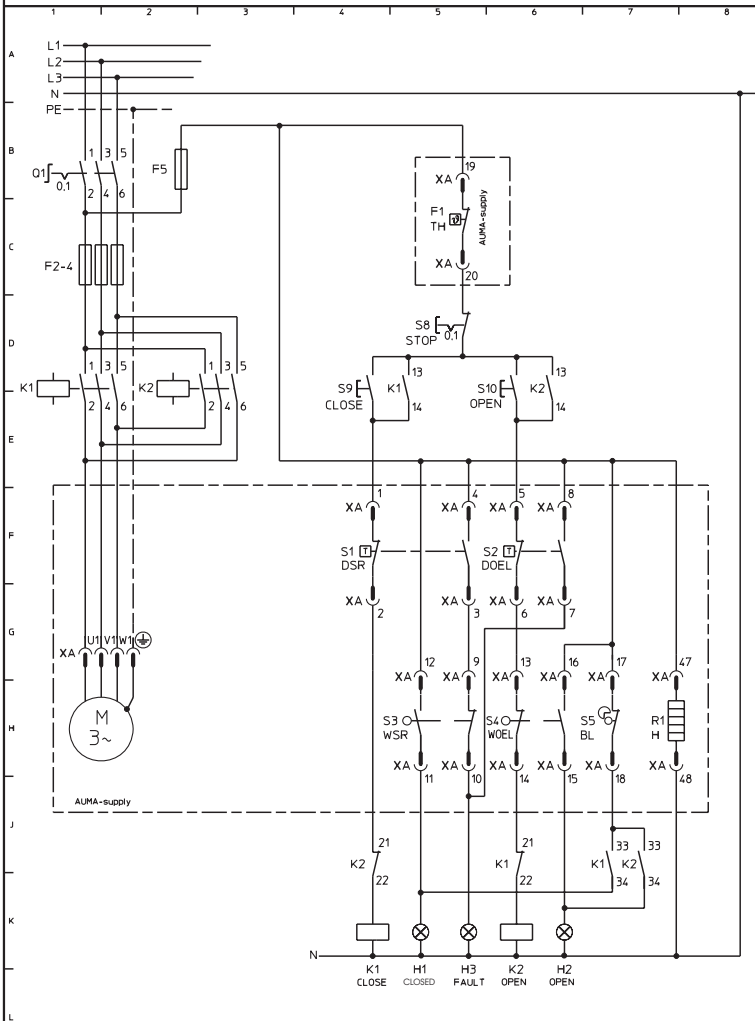
M		Motor (3-phase AC)
S 1	DSR	Torque switch, closing, clockwise
S 2	DOEL	Torque switch, opening, counterclockwise
S 3	WSR	Limit switch, closing, clockwise
S 4	WOEL	Limit switch, opening, counterclockwise
S 5	BL	Blinker transmitter
F 1	TH	Thermoswitch
Q 1		Main switch
S 8		Push button STOP
S 9		Push button CLOSE
S 10		Push button OPEN
K 1, K 2		Reversing contactors
F 2 - F 5		Fuses
H 1		Indication light end position CLOSED
H 2		Indication light end position OPEN
H 3		Indication light FAULT
R 1	H	Heater



CLOSED Torque seating

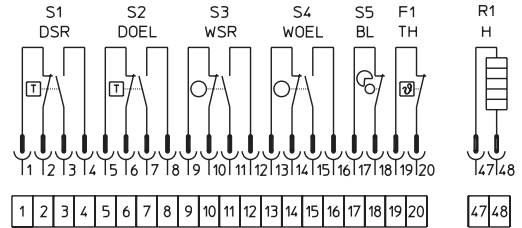


OPEN Limit seating

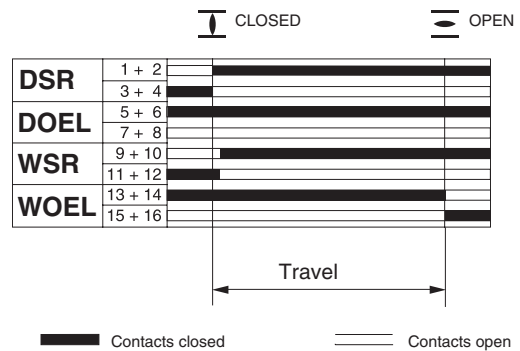


#### Basic equipment

##### KMSTP110/001



#### Limit switch tripping



DSR and DOEL act as overload protection for the whole travel. DSR interrupts the control circuit when reaching the set torque, the actuator is tripped. Set WSR as to ensure that it is tripped shortly before reaching the end position CLOSED.

Wiring diagram for standard version, multi-turn actuator closes valve clockwise. The wiring diagram shows the non-rotating multi-turn actuator in intermediate position.

M		Motor (3-phase AC)
S 1	DSR	Torque switch, closing, clockwise
S 2	DOEL	Torque switch, opening, counterclockwise
S 3	WSR	Limit switch, closing, clockwise
S 4	WOEL	Limit switch, opening, counterclockwise
S 5	BL	Blinker transmitter
F 1	TH	Thermoswitch
Q 1		Main switch
S 8		Push button STOP
S 9		Push button CLOSE
S 10		Push button OPEN
K 1, K 2		Reversing contactors
F 2 - F 5		Fuses
H 1		Indication light end position CLOSED
H 2		Indication light end position OPEN
H 3		Indication light FAULT
R 1	H	Heater