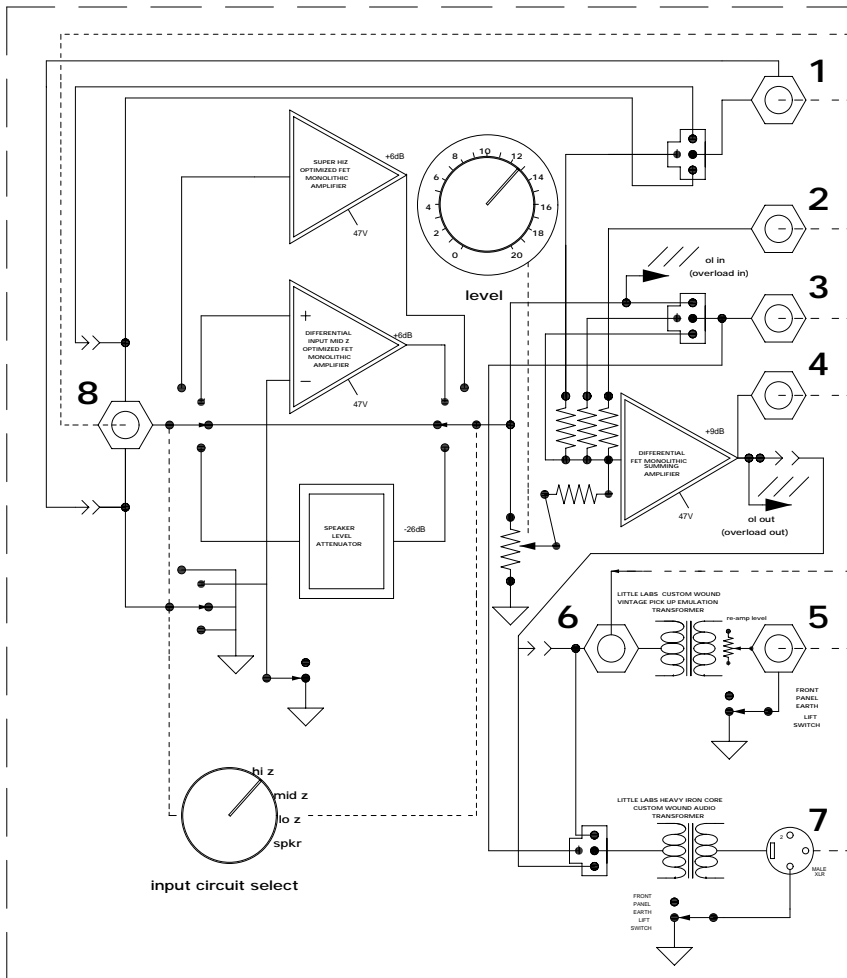


Multi Z PIP Professional Instrument Pre-amp / Re-amp / Direct Box Functional Block Diagram



1 Main instrument in. This front panel jack is where you plug your instrument in or, in a rack mounted application, you can plug your instrument into the rear panel instrument thru jack.

2 Instrument thru. This can be used as a rear main instrument input jack **OR** a thru jack (mult) out to feed your instrument amp **OR** as a rear main instrument input jack that is interrupted when you plug in the front (the default setting and especially useful in a rack mounted situation) **OR** as an extra summing amp input.

3 Summing amp in. Use this input to sum with the main input devices such as bass pedals, keyboards etc. The PIP can be used as a mini hi fidelity mixer!

4 Buffered output. Internal user configurable jumpers can set this output to be fed from either pre or post the level pot (pre is the default setting) **OR** this output can be configured as a trs volume (tip send /ring return)"expression" pedal jack pre or post level pot **OR** this output can be an extra summing amp input.

5 Balanced only expansion out. This line level output can be used as a balanced insert send pre the instrument level hi Z transformer out (re-amplifier) and, if installed, pre the line level or mic level lo Z output transformer. This allows you to insert a piece of pro gear before the PIPs main xlr output. This insert will also allow you to properly interface pro gear before your guitar amp and still achieve the proper tone of a pickup plugged directly into the amp.

6 Re-amplifier input and instrument level hi Z main output (re-amp out). The re-amplifier section can be used completely independent of the rest of the Multi Z PIP. Use it to re-amp guitars or to use vintage pedals on a send, Use it in conjunction with The DI section (for gain make up) to use vintage pedals on an insert. Re-amplifier level is set by a 10 turn trim pot located on the rear of the PIP. The re-amplifier out is also the main guitar level/impedance, transformer isolated, ground liftable output for the Multi Z Professional Instrument Preamp.

7 Balanced main XLR output. This output is available with three options. Line level transformer less out, Line level transformer isolated out, or mic level/impedance transformer isolated out. Internal user configurable jumpers can set this output to be fed pre or post the re-amplifier input jack or when using the mic transformer, pre or post the level pot.

