

LogMeIn Hamachi Getting Started Guide

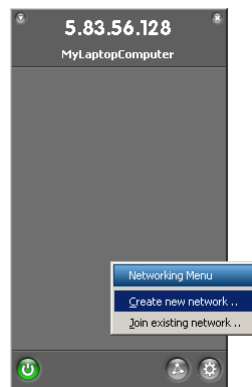
If you haven't already done so, you will need to download the LogMeIn Hamachi software from www.LogMeInHamachi.com/download.

The installation process is straightforward. Once Setup has finished, Hamachi detects if you are running the program for the first time and runs a Quick Guide for new users to acquaint themselves with the program basics. By following this guide, you will be set up with a Hamachi address.

Once Hamachi is installed, you will see its application files in "c:\program files\hamachi" and its configuration data in "c:\documents and settings\<user>\application data\hamachi".

Creating a Network

Using Hamachi begins with the creation of a network. You do this by selecting the **Networks** button and then the **Create new network** option.



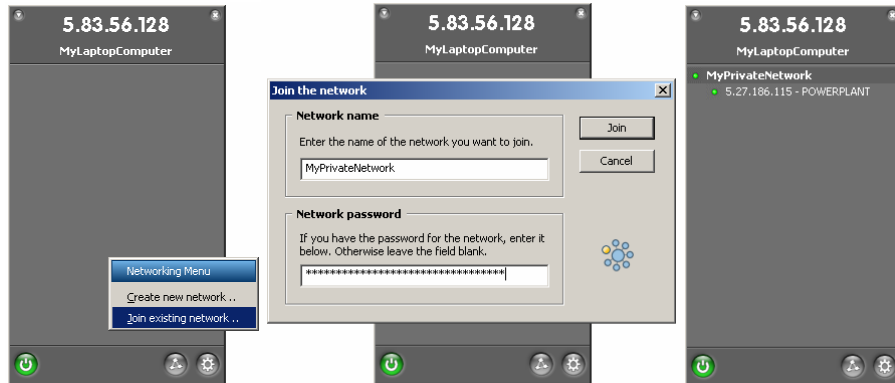
In the **Create new network** dialog box, you will need to name your network and create a password. The network name should be unique in the Hamachi system and is limited to 64 characters in length. The password - or passphrase - should be something that only you know and is very hard to guess – the security of your network is dependent on this passphrase. There is no limit on the length of the passphrase. Once you have done this, click **Create** and the network now appears in the UI.



Circulate the details of your new Hamachi network to anyone you wish to have as a member. By default, anyone in possession of these details can join your network. More advanced users might want more stringent control, such as manually approving new network members – but this is beyond the scope of this guide.

Joining a Network

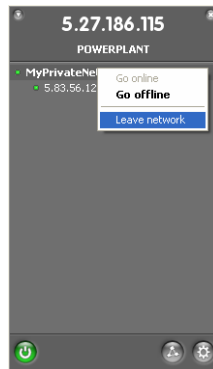
The next step is to have other computers join your network. On a computer other than the one used to create the network, click on the **Networks** button. In the menu that appears, select **Join existing network**.



The Quick Guide gives you an example network to join; however, in the above example, the name and passphrase of another network: **MyPrivateNetwork**, have been entered. The next step is to select **Join**. The network then appears in your UI network field, showing that you have joined it.

Leaving a Network

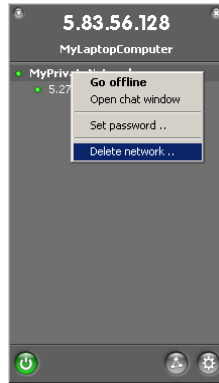
Leaving a network created by someone else is done by right clicking on a network in the UI and selecting **Leave network**.



Deleting Your Networks

If you wish to leave a network that you created, the situation is significantly different. In this case, you do not leave a network, but you destroy it. Be careful with this option, as it will completely sever all the connections between all other members of that network and the action is *irreversible*.

It is done by right clicking on your network and selecting **Delete network**.



Once you confirm the action, the network will disappear from your UI and that of every other network peer.

Example Usage Scenarios

Simple File Sharing

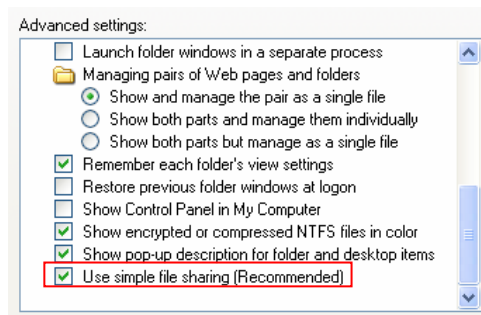
Part of this guide involves changing your Windows settings. Please ensure you have permission to do this with your network administrator if you have one.

This will need to be done on every machine that you intend to share files with.

1. Enable Simple File Sharing.

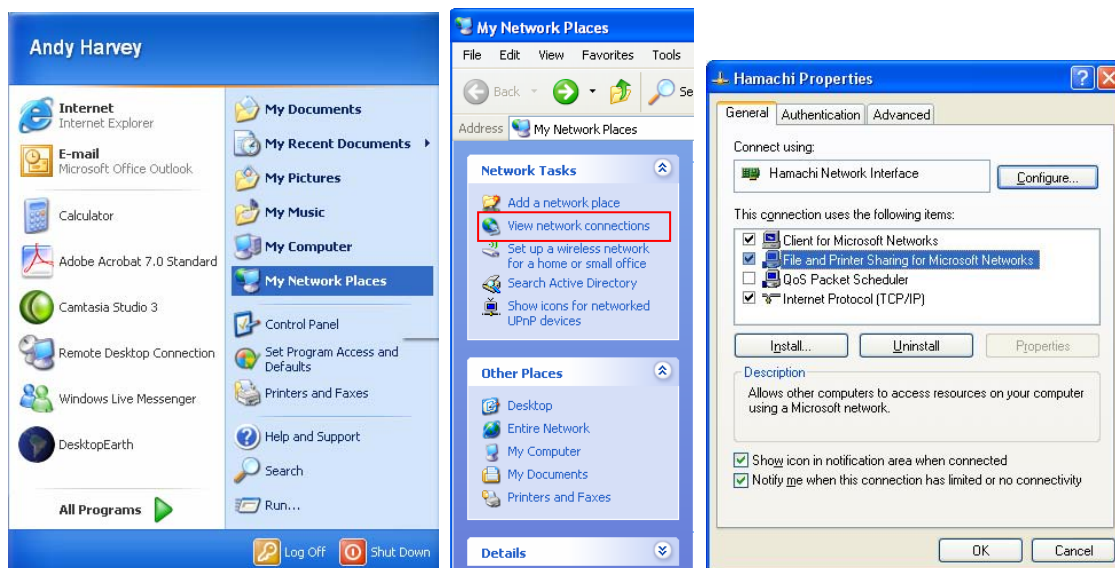
If you are using XP Professional you have this option. XP Home does not have this option. It is enabled by default.

Select any folder, then select **Tools > Folder Options > View**, then in **Advanced Settings** scroll down to the **Use Simple File Sharing** option and check it. Alternatively, you can choose to enable your entire **My Documents** folder, but be aware that this allows all your network peers to see every document in this folder.



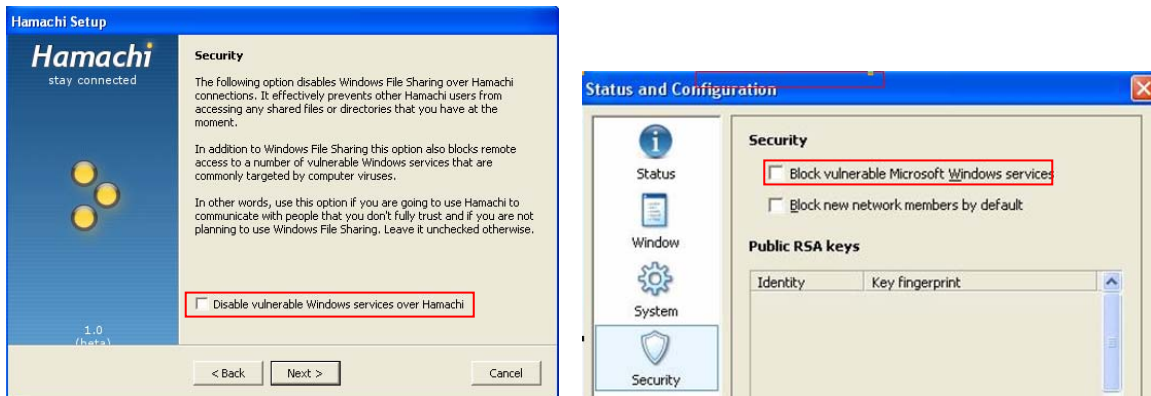
2. Make sure your Hamachi adapter is enabling File Sharing.

Go to My Network Places then select **View Network Connections**. Right click on the Hamachi Network adapter icon, select Properties, then select the General tab page and check the **File and Printer Sharing for Microsoft Networks** option.



Hamachi has an option to disable system services required for file sharing – see the screenshots from the setup or from the Preferences menu below:

LogMeIn Hamachi Getting Started Guide



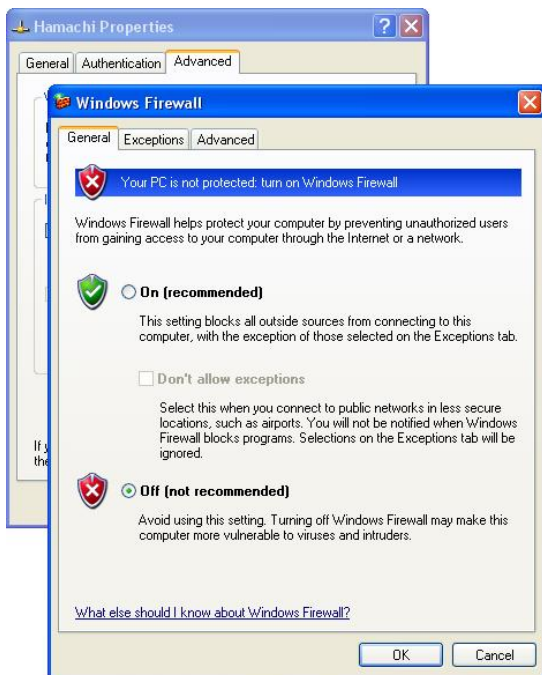
Do not check either of these boxes, otherwise File Sharing will be disabled.

When Hamachi is installed, it adds a network adapter to your computer. This adapter is subject to your default firewall rules.

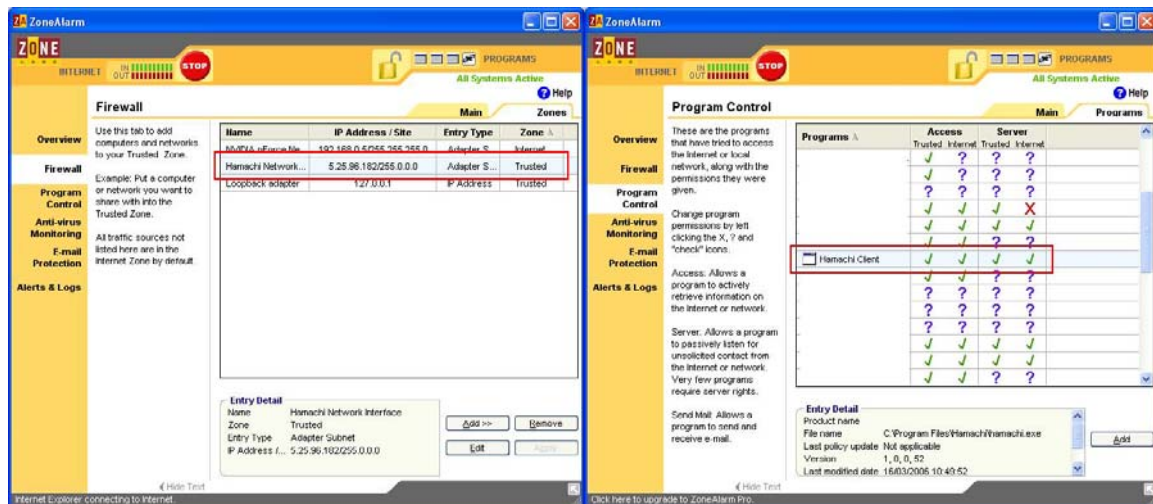
If you are using Windows XP firewall, or other personal firewall software such as ZoneAlarm, Norton, Kaspersky or Kerio, please remember to adjust the configuration on the Hamachi adapter as needed.

If you are using a firewall other than the Windows Firewall, you will need to ensure that it allows Internet access for the Hamachi adapter. The example below is for Zone Alarm, but a similar process will need to be carried out for any third party firewall.

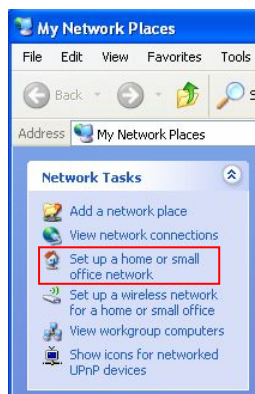
If you are running the Windows Firewall service, go to **My Network Places > View Network Connections**. Right click on the Hamachi icon, then select **Properties**, and the **Advanced** tab page, then **Windows firewall > Settings > Off**.



3. If you are using Zone Alarm, we advise these settings:



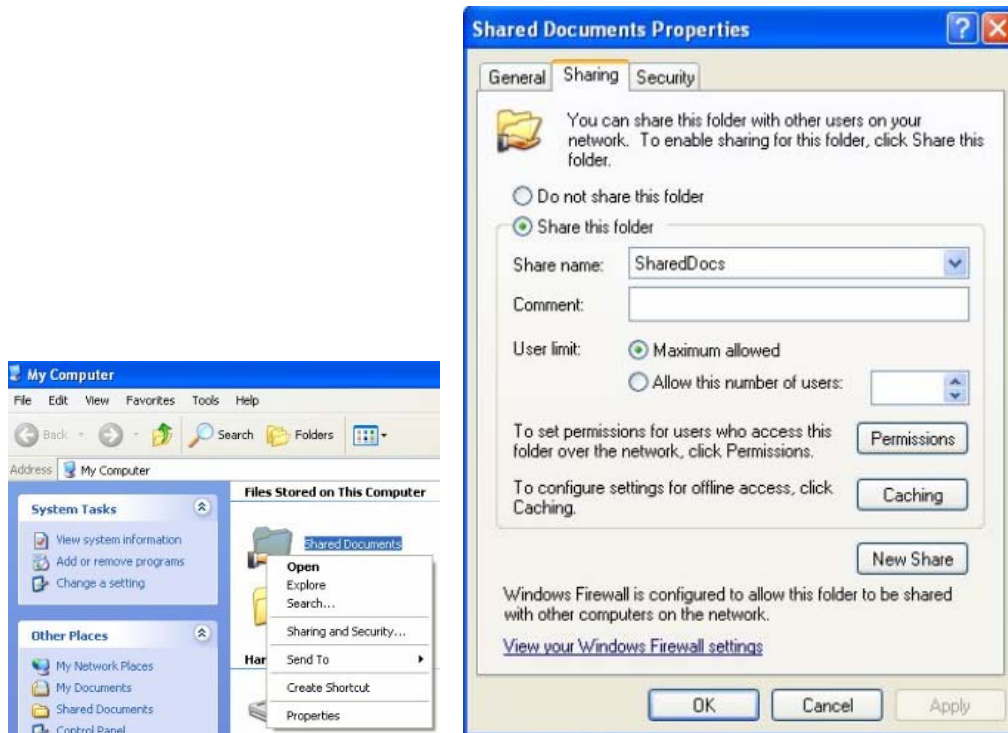
4. Set up a new network by following this series of commands:



- Go to My Network Places > Set up a home or small office network
- Click **Next**, then **Next**
- Select **Other**, click **Next**, select **This computer belongs to a network that does not have an internet connection**
- Click **Next**, Give your computer a name, it doesn't matter what you choose
- Click **Next**, and enter a workgroup name. This must be the same on all PCs. We recommend "Hamachi"
- Click **Next**, select **Turn on file sharing** and keep clicking **Next** when prompted
- Finally, select **Just finish the wizard** and that completes the process.

5. Make sure you have a shared folder.

By default you have a shared folder, but if you somehow disabled it, go to My Computer, right click **Shared Documents** > **Properties** > **Sharing**, select **Share this folder** and name it if it isn't already named. Make any other settings using the dialog box, then select OK.



You now have a functioning file sharing network over Hamachi.

Note: File sharing performance on cellular networks (EVDO, UMTS, etc) will suffer due to high latency.

iTunes

Most people have iTunes and once you have both Hamachi and iTunes running on your machine, there are two easy steps to get them working together:

Sharing your music:

- Open iTunes

- Click **Edit>Preferences>Sharing**

- Click the **Share my music** checkbox

- [Optional] You can share just selected playlists by checking the **Share selected playlists** radio button and checking the playlists you would like to share.

- You can change the name your listeners will see by changing **Shared name**.

- You can set a password by checking the **Require password** checkbox and by entering the password you want into the textbox.

To be able to view shared music (this is usually on by default):

- Open iTunes

- Click **Edit>Preferences>Sharing**

- Click the **Look for shared music** checkbox

Now your peers should be able to see your music in the left pane of iTunes (the **Source** pane). Shared music usually shows up after the music store, before playlists, with a blue icon to the left of the shared music. Click on the name of the shared music you would like to listen to, wait a few seconds for iTunes to load the shared music and, eureka, you're sharing music extremely easily.

Streaming "Digital Restrictions-Managed" iTunes content will also work over Hamachi, but both the sender and the receiver must be authorized to play the content, counting against the current iTMS limit of 5.