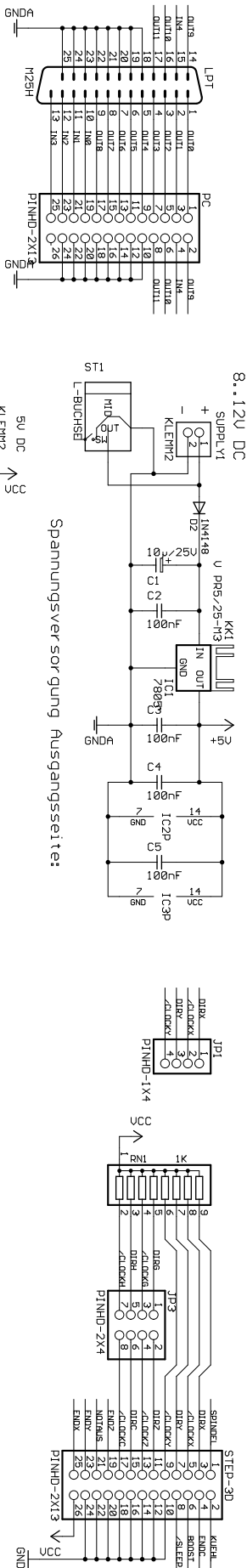
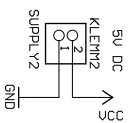


Spannungsversorgung PC-seitig:

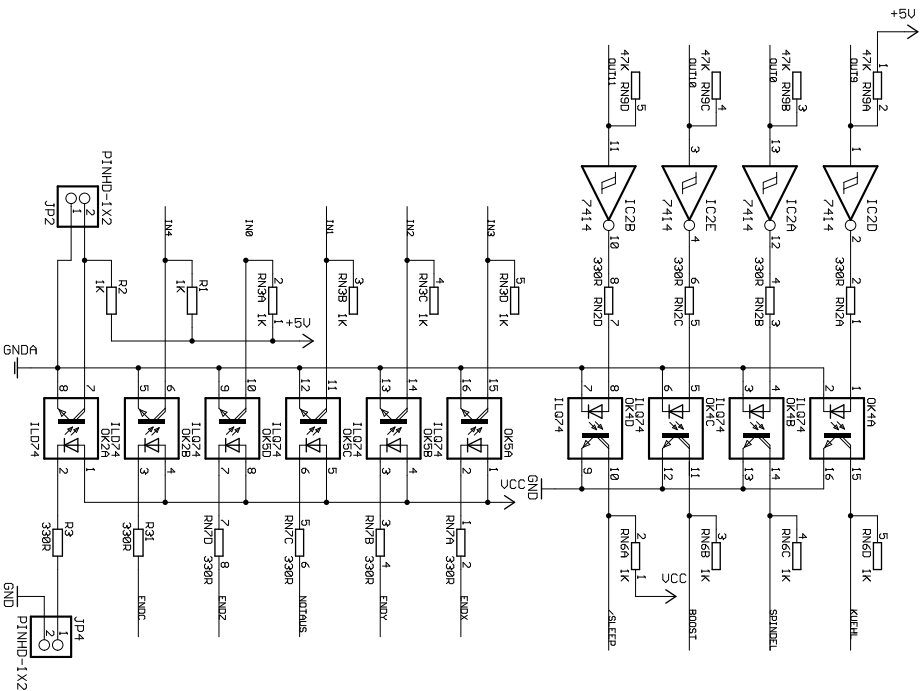
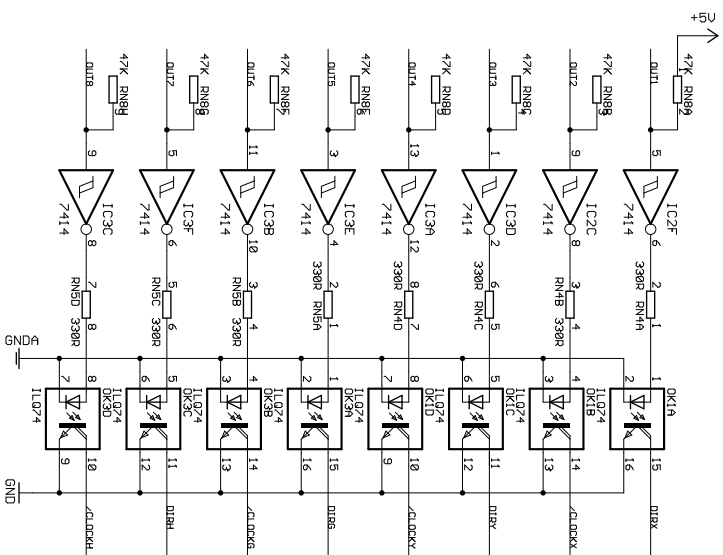


11..17U AC
8..12U DC

Spannungsversorgung Ausgangsseite:



Uersorgung über Klemme oder über Flachbandkabel



PP-Optokoppler

wuu,,NC-Step.de

TITLE: pp_opto_1_2

Document Number:

Created by: T. Ostermann

Date: 20.05.2004 13:19:16

REV: 1,2

Sheet: 1/1